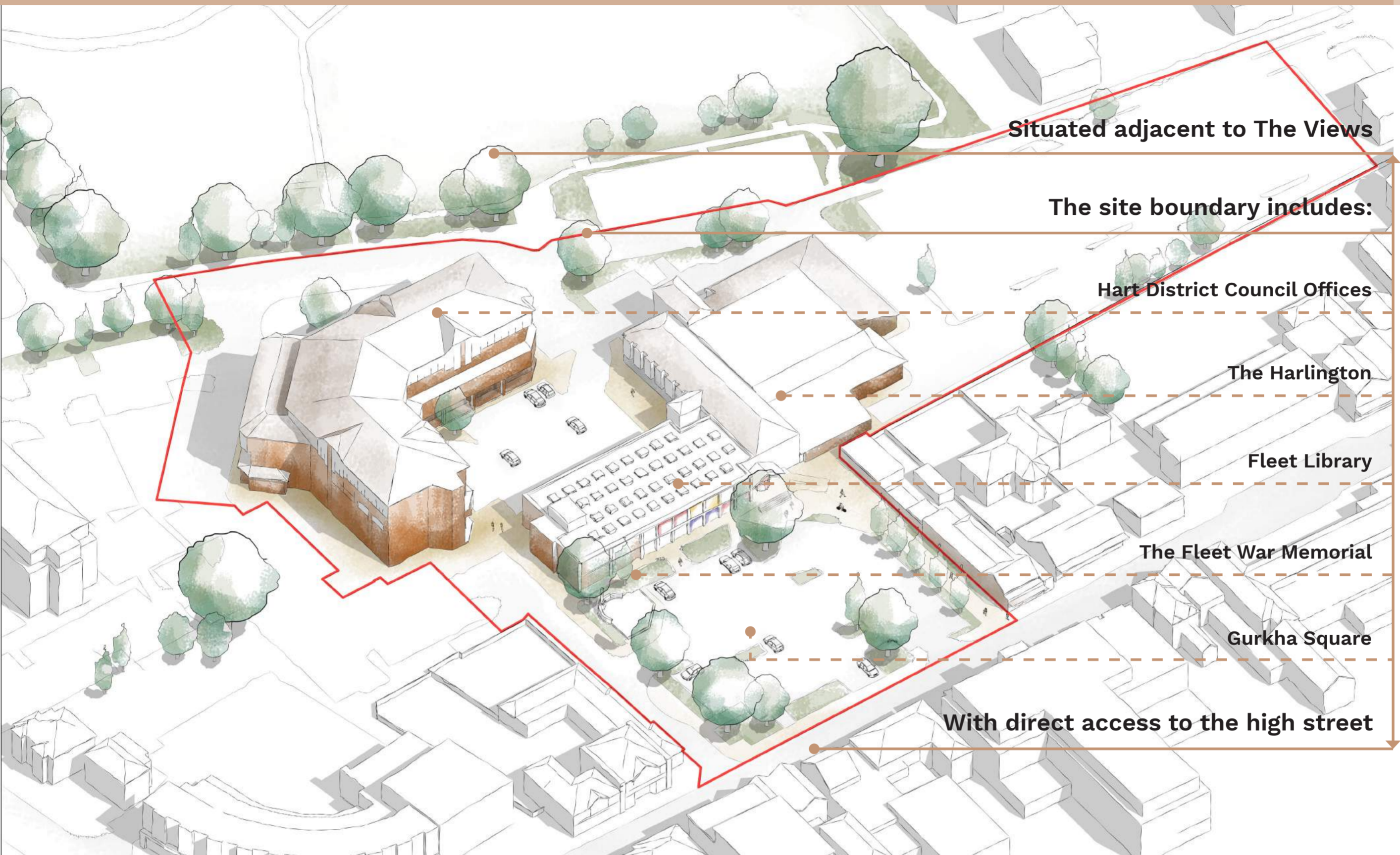


## WHAT IS THE CIVIC QUARTER?



We want to regenerate the Civic Quarter to provide new, modernised, multi-functional facilities for the whole community. The variety of uses will support the high street and increase footfall in the town centre to ensure that Fleet remains successful and attractive to all. The regeneration will create a new civic heart for Fleet town centre and a destination for the whole district.

### POTENTIAL CHALLENGES

  
balancing the needs of multiple community groups

  
Creating a viable, deliverable proposal

  
retaining the same amount of town centre parking

  
Providing continuous services throughout construction

  
Potential physical site challenges



### POTENTIAL OPPORTUNITIES

  
Replacement of end-of-life facilities with state-of-the art buildings

  
Upgraded, pedestrian focussed public realm

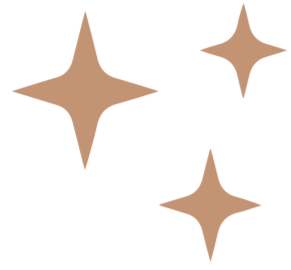
  
New links to the Views and Calthorpe park cycleway

  
Creation of a town centre heart for all occasions

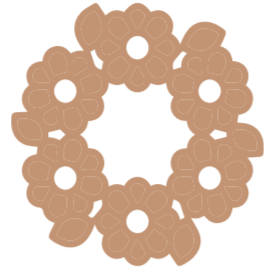
  
Mixed facilities to better support the high street

  
More inclusive, accessible community facilities





**New facilities to improve Fleet's offering to its residents**



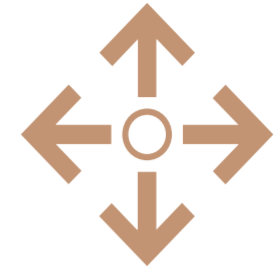
**An appropriate setting for major public events**



**A lively town square - a destination for all generations**



**Landscaping to support biodiversity**



**Connected open space from the Views to the High Street**



**Ground floor uses which support the day and night economy**



**Inclusive, adaptable public spaces**



**Increased footfall to better support the high street**



**New town centre homes**



**Sustainable design to lower Fleet's carbon footprint**



# MULTI-FUNCTIONAL COMMUNITY & PERFORMANCE VENUE

A DYNAMIC  
COMMUNITY VENUE  
FOR FLEET TOWN CENTRE

POTENTIAL TO  
SUPPORT  
EXTERNAL  
PERFORMANCES  
& EXHIBITIONS



FLEET TOWN  
COUNCIL  
HEADQUARTERS



AN INSPIRATIONAL  
DESTINATION  
FOR THE WHOLE OF  
HART DISTRICT



STAGE  
CAFE / BAR



NEW RECORDING FACILITIES  
TO SUPPORT THE DIGITAL CULTURAL SCENE

DIGITALLY  
CONNECTED



TO ALLOW FOR  
VIRTUAL EVENTS



FLEXIBLE

TO PROVIDE FOR ALL



Cinema



Community  
events



Theatre  
Companies



Live  
Music



Conference  
events



Local  
Exhibitions



Community  
groups



Dance



Comedy



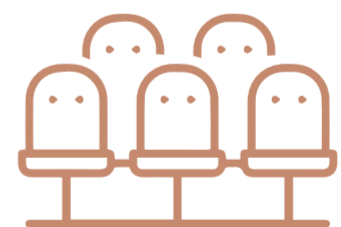
Fitness



STATE OF THE ART  
MULTI-FUNCTIONAL  
VENUE

WITH TWO HIGHLY FLEXIBLE  
PERFORMANCE SPACES  
CAPABLE OF HOSTING  
A WIDE VARIETY OF EVENTS

NEW FLEXIBLE  
AUDITORIUM  
WITH RETRACTABLE  
SEATING FOR

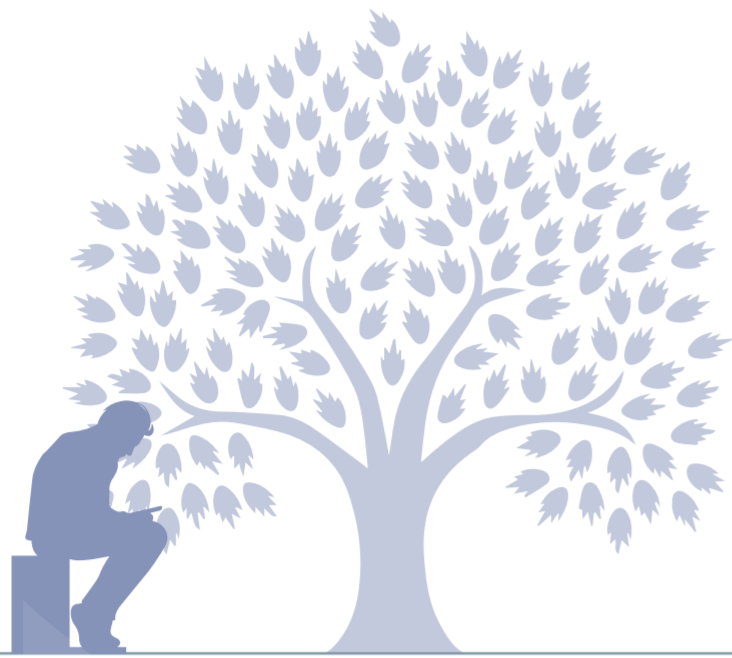


360-400 &  
AUDIENCE MEMBERS

A SECONDARY STUDIO  
FOR PERFORMANCES  
REHEARSALS AND CLASSES

LIVE

A NEW MULTI-FUNCTIONAL COMMUNITY VENUE THAT IS THE HEART OF THE TOWN CENTRE



# KNOWLEDGE HUB, LIBRARY & COMMUNITY FACILITY

WITH A STRONG FOCUS ON **SUPPORTING THE COMMUNITY** AND PROVIDING A HOME FOR **LEISURE AND LEARNING**

**A NEW MULTI-PURPOSE LIBRARY AND COMMUNITY SPACE FOR FLEET TOWN CENTRE**

AN ACCESSIBLE FACILITY FOR COMMUNITY SERVICES

SUCH AS...

Hart Voluntary Action



The Point Youth Facility

Community learning services



**EXPANDED CHILDREN'S BOOK COLLECTION**



**EXTENSIVE FICTION & NON-FICTION COLLECTIONS**

**DYNAMIC PROJECT ROOMS**

WITH

**DIGITAL AND INTERACTIVE TECHNOLOGY**

TO SUPPORT NEW WAYS OF LEARNING

**ACCESS TO A SHARED COMMUNITY CAFE**

**FLEXIBLE MEETING SPACE TO SUPPORT...**

- Fitness and movement classes
- Arts and crafts events
- Adult language classes
- Library events
- Pop up opportunities
- and much more...



**QUIET STUDY ZONES & DIGITAL AREAS TO SUPPORT INDEPENDENT STUDY**

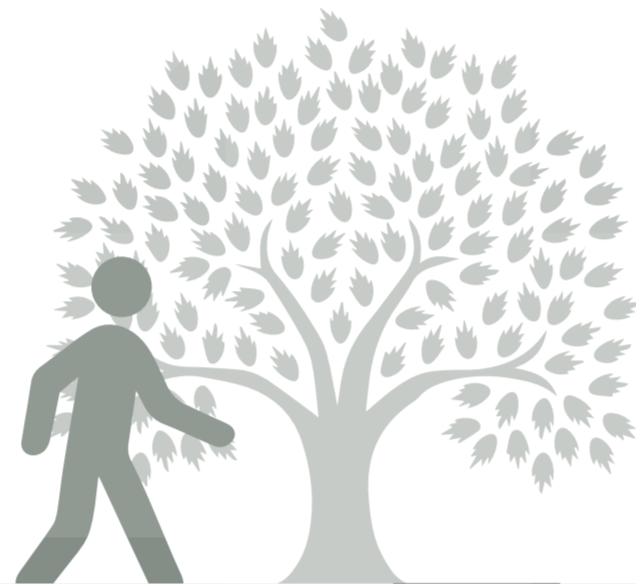


**DIGITAL HUB WITH ACCESS TO THE FULL E-BOOK COLLECTION**

**A SAFE COMMUNITY SPACE WHICH SUPPORTS LEARNING, DEVELOPMENT & INNOVATION**

# LIVELY, SUSTAINABLE PUBLIC REALM

**CREATING A  
DYNAMIC  
TOWN SQUARE FOR  
THE HART COMMUNITY**



**NEW HIGH QUALITY  
PUBLIC REALM  
CENTRED AROUND KEY  
COMMUNITY  
LANDMARKS**



### FOCUS ON...

Connecting to The High Street

Connecting to The Views

Encouraging sustainable travel

Inspiring landscaping

Creating a safe, accessible space



**OPEN SPACE  
TO SUPPORT A WIDE RANGE  
OF ACTIVITIES**

SUCH AS...



Market days



Celebratory gatherings



Exhibitions & Performance



External Cafe Seating



A Place to meet



Children's Play

**AN IMPROVED PEDESTRIAN EXPERIENCE**



**PROTECTION  
OF PARKING  
FACILITIES**

As defined in the neighbourhood plan development at the civic quarter will aim to ensure no net loss of parking across the town centre

INCLUSION OF  
**FLEXIBLE  
MARKET PAVILIONS**  
TO SUPPORT A VARIETY  
OF COMMUNITY EVENTS

**A DYNAMIC, ACTIVE SPACE  
ALL YEAR ROUND**

**A NEW COMMUNITY HEART WHICH LINKS ALL ELEMENTS OF THE REGENERATED CIVIC QUARTER**

### CONTEMPORARY OFFICE SPACE

FOR

HART DISTRICT COUNCIL

COUNCIL PARTNERS

LOCAL BUSINESSES

& HOME WORKERS

WITH A FOCUS ON  
COLLABORATION  
AND GROUP WORKING

A SPACE WHICH PRIORITISES  
**HEALTH &  
WELLBEING**



project rooms for  
team days



bookable meeting  
rooms



Screens for  
specialist work



social breakout  
spaces



Quiet rooms,  
booths & pods



Democratic  
spaces

# SHARED COMMUNITY & CIVIC WORKSPACE

## BUSINESS HUB

WITH IMPROVED PUBLIC  
ENTRANCE  
AND ACCESS TO  
GREEN SPACE



**RENTABLE  
WORKSPACE  
FOR THE LOCAL  
COMMUNITY**

PROVIDING CONTEMPORARY,  
**DIGITALLY ENABLED  
TOWN CENTRE**  
WORKSPACE OPTIONS



## FLEXIBLE SPACE FOR RECREATIONAL ACTIVITIES

SUCH AS

Yoga for workers  
Seminars  
Pop up salon  
Mental Health  
consultation  
...



Increasing footfall on the  
local high street



A base for local  
businesses



Bookable desks



Innovative meeting  
spaces to promote  
working together



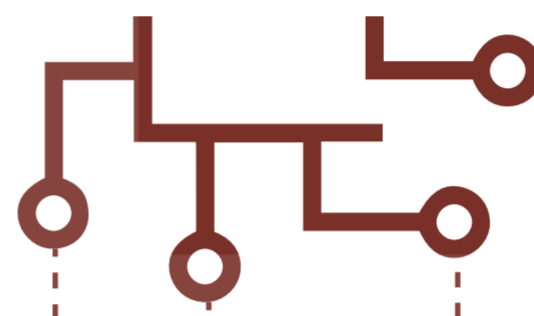
Relieving the pressures of  
home working

A DIGITALLY ENABLED WORKSPACE WHICH SUPPORTS ALL MEMBERS OF THE HART COMMUNITY

# NEW TOWN CENTRE HOMES



CREATING A LARGER  
LOCAL COMMUNITY  
TO SUPPORT THE  
**HIGH STREET &  
THE CIVIC QUARTER**



SITUATED ADJACENT  
TO THE LIVELY TOWN SQUARE  
**WITH PUBLIC  
GROUND FLOOR USES**  
SUCH AS...

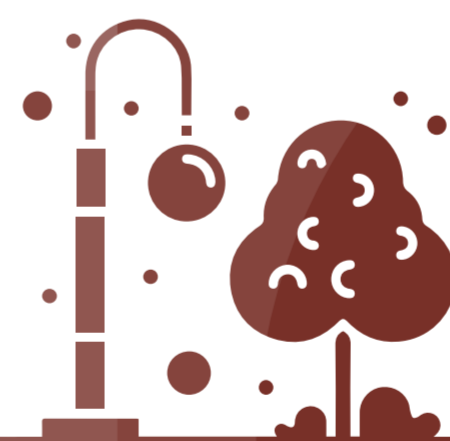
Retail space to compliment  
the local high street

Community and Commercial  
uses as set out in other posters

Facilities to support health  
and wellness

PROVIDING  
**ACCESSIBLE  
INCLUSIVE HOMES**  
FOR THE HART COMMUNITY

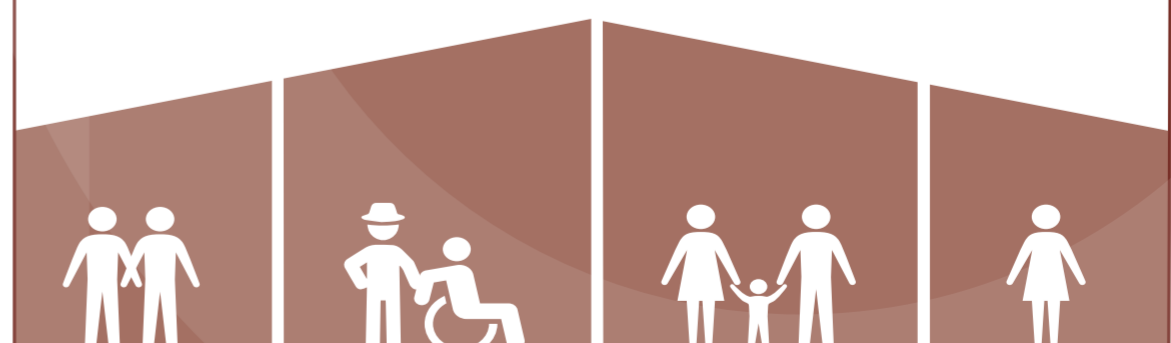
**PRIME ACCESS AND OUTLOOK TO  
THE VIEWS, TOWN SQUARE  
AND THE HIGH STREET**



**ENSURING A  
SAFE AND CLEAN  
NEIGHBOURHOOD  
ENVIRONMENT  
AT ALL TIMES**

PROMOTING  
**SUSTAINABLE,  
LOW CARBON  
HOUSING**

PROVIDING A MIX OF HIGH  
QUALITY TOWN CENTRE HOMES



Young  
Couples

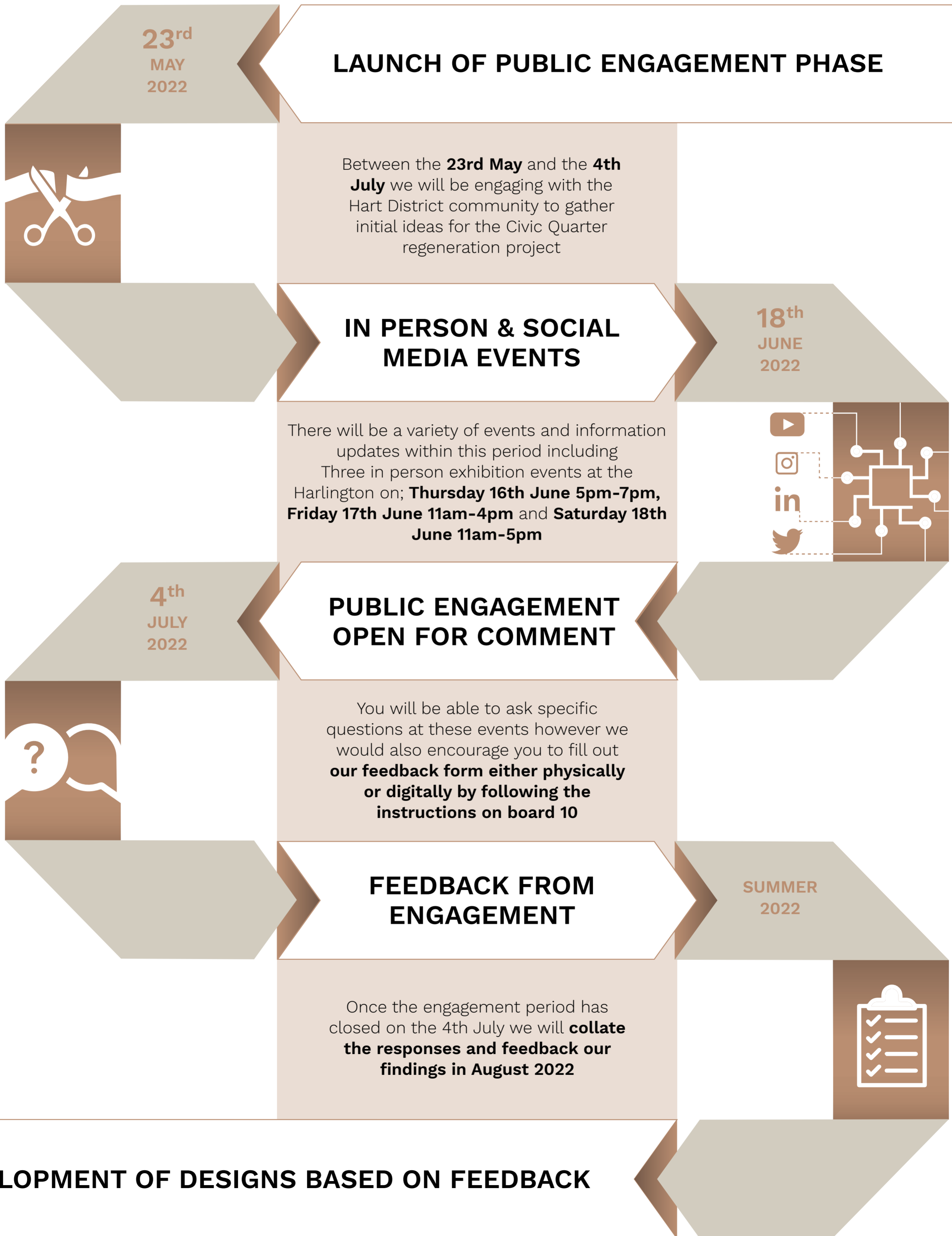
Older  
Residents

Growing  
Families

First time  
buyers

**NEW HOUSING WHICH PROVIDES A DEDICATED COMMUNITY TO SUPPORT THE HIGH STREET**





# CIVIC QUARTER REGENERATION

## CRITICAL SUCCESS FACTORS - HAVE YOUR SAY!

10

In order to develop designs for the Civic Quarter which best reflect the needs and desires of the Hart community we intend to determine a set of 'critical success factors' which will guide and tailor future decisions on the Civic Quarter regeneration project.

Below is a list of example critical success factors which we need your help to refine. You can do so by responding to our feedback form either online or in person as set out below.

A WIDE VARIETY OF FACILITIES THAT WILL OFFER SOMETHING NEW FOR EVERY GENERATION

IMPROVED PUBLIC OPEN SPACE WITH GREATER FOCUS ON PEDESTRIAN USE

NEW AND DYNAMIC FACILITIES FOR CULTURE AND THE COMMUNITY

A SUSTAINABLE, HEALTHY, NET ZERO CARBON DEVELOPMENT

MINIMISED LOSS OF PARKING ACROSS THE TOWN CENTRE

IMPROVED CONNECTIVITY TO THE VIEWS AND THE HIGH STREET

ATTRACTIONS THAT WILL SUPPORT BUSINESS ON THE HIGH STREET

FLEXIBLE WORKSPACE WHICH WILL SUPPORT LOCAL BUSINESS AND HOME WORKERS

PROVISION OF NEW TOWN CENTRE HOMES

A VIABLE, DEVELOPMENT THAT IS DELIVERABLE WITHIN A REASONABLE TIMEFRAME

**WHAT ARE YOUR  
CRITICAL  
SUCCESS FACTORS?**

Please show us what is important to you by responding to our feedback form. There are two ways in which to do this:

**Online:**  
Click [here](#) or  
use the QR code  
adjacent



**Physical form:**  
Please pick this up from the  
Harlington and give it to the District  
Council front desk once complete