

Hart Local Plan Refined Housing Consultation 2016

Geographic analysis – Questions 4 and 5 Location of responses by postcode

This map shows the national distribution of responses from the Hart Local Plan consultation 2016 based on the postcode respondents gave

Both Questions 4 and 5 were each answered by **4,480** respondents

Of those responses **4,444** respondents to each question provided postcodes that could be validated

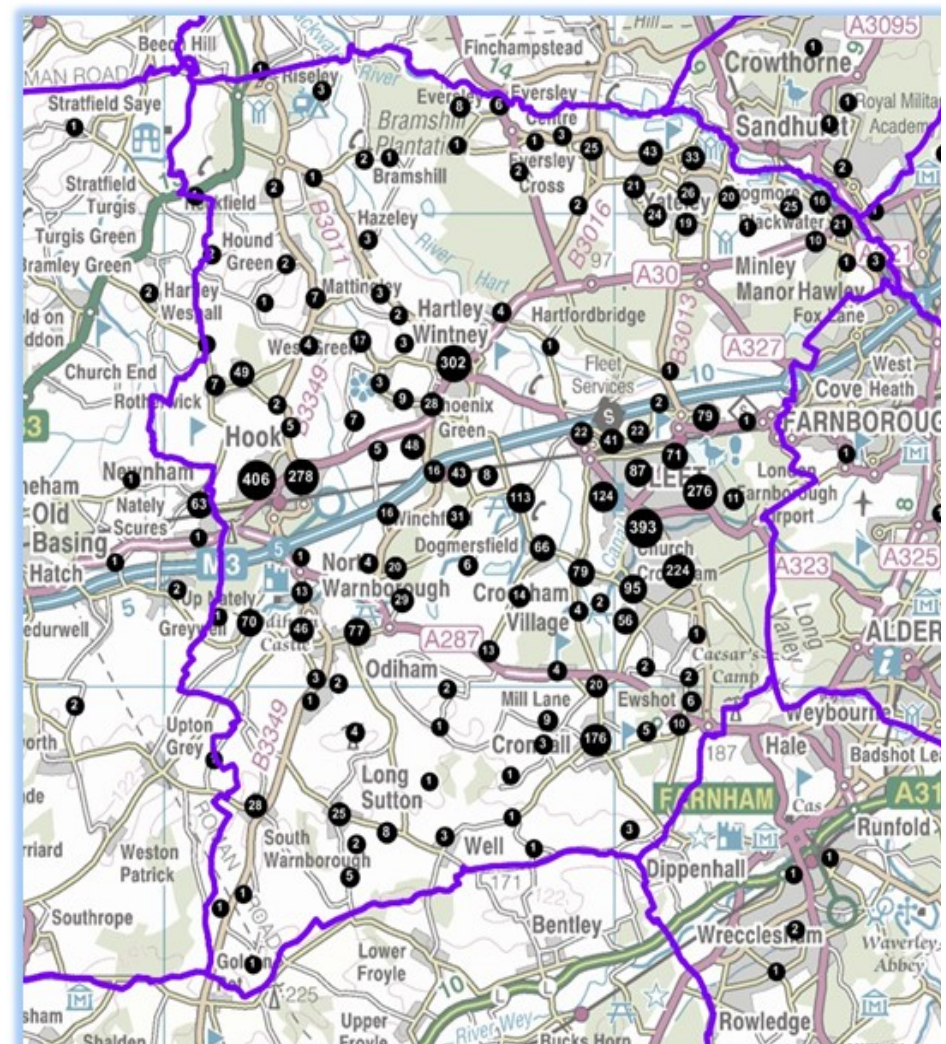
36 respondents to each question provided a postcode that could not be validated

The majority of responses were in or around Hart (**4,320**) with **4,030** of these located within the district boundaries



Location of responses in Hart

The Map below focuses on the responses from within the administrative area of Hart. The evidence is that the whole of the district has been actively engaged in the consultation process. A relatively even spread across the district can be seen.



Question 4: Primary Approaches

Question 4 identified three possible approaches that could deliver new homes in Hart. The respondents were asked to identify which one the Council should prioritise to deliver the majority of Hart's housing needs.

The question sought views only on what should be the Council's primary approach to delivering Hart's housing needs. The text to the question made clear that it did not mean it would be the only approach. The Council will need to ensure that it delivers a constant supply of new homes throughout the Local Plan period. Some elements of lesser preferred approaches may need to be included in the Local Plan.

4,480 respondents answered Question 4. **4,030** were from respondents with postcodes that were within the District boundary. **414** responses were from outside the District and **36** responses gave post codes that could not be matched

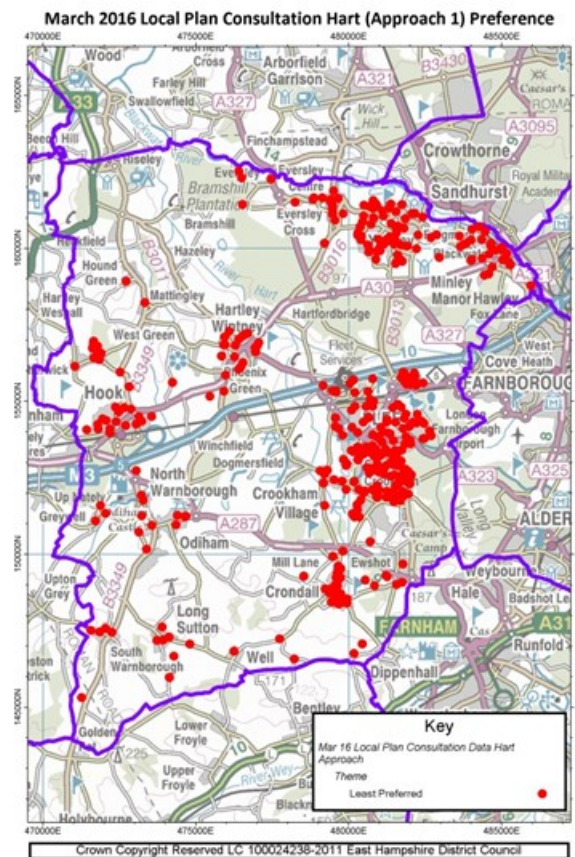
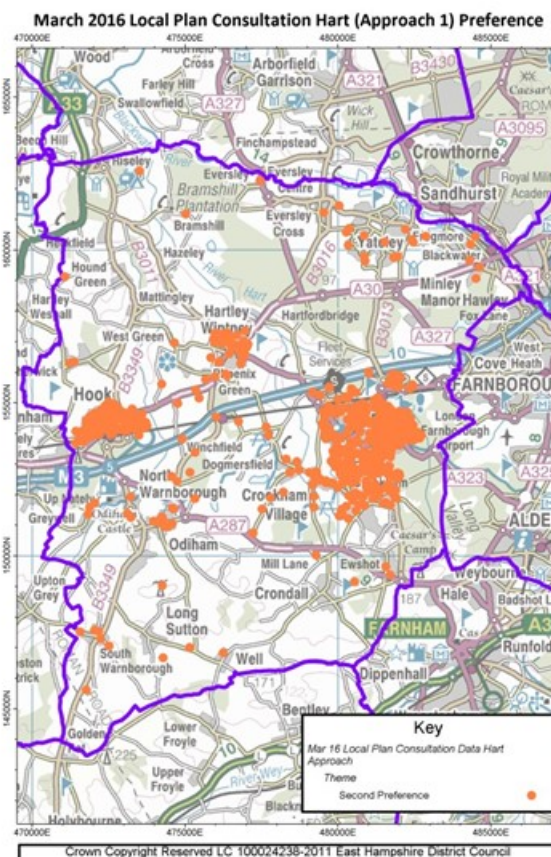
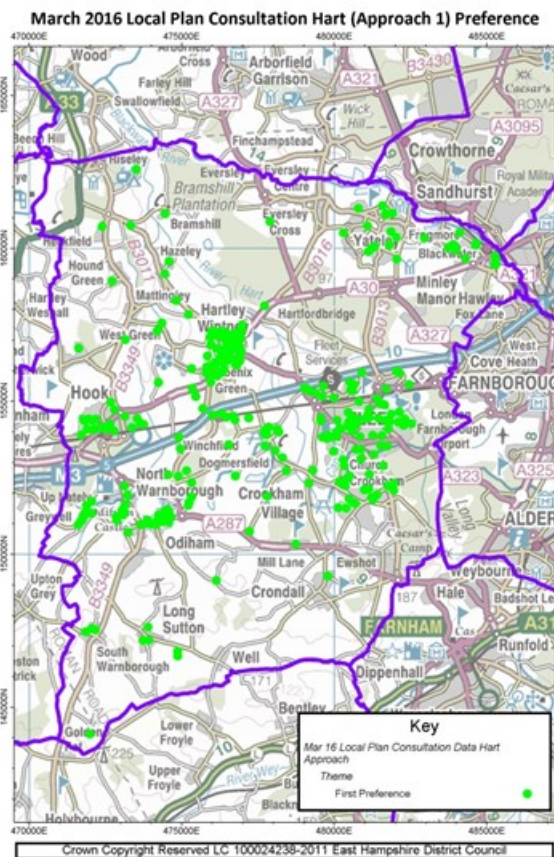
Respondents were asked to rank their choice in order of preference (1 = most preferred to 3 = least preferred)

		(First preference.....Least preferred)		
		1 ●	2 ●	3 ●
Approach 1	Dispersal	1,291 (29%)	2,100 (47%)	1,089 (24%)
Approach 2	Urban Extension	564 (13%)	2,106 (47%)	1,810 (40%)
Approach 3	New Settlement at Winchfield	2,625 (59%)	274 (6%)	1,581 (35%)

NB all percentages rounded to the nearest whole number.

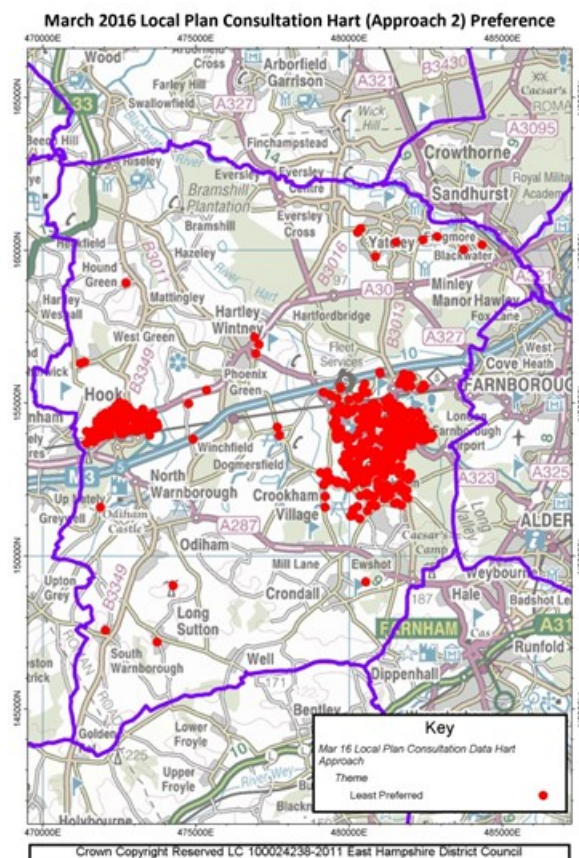
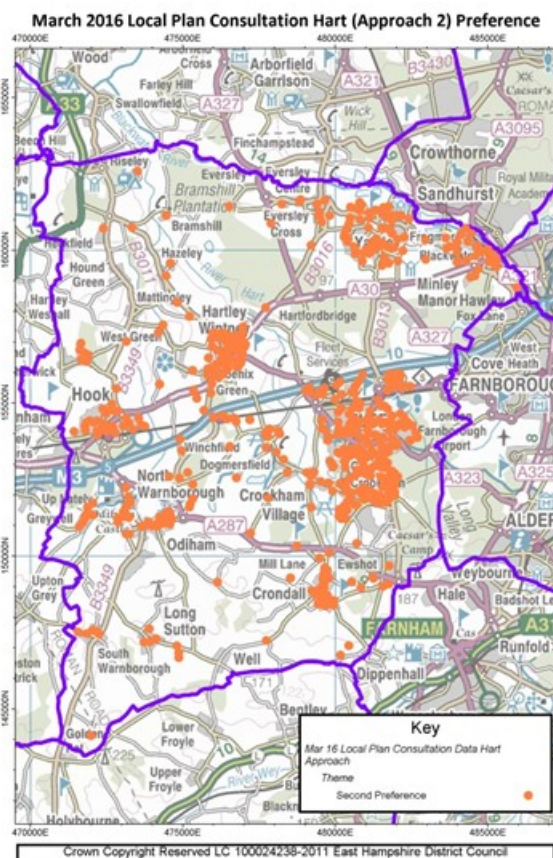
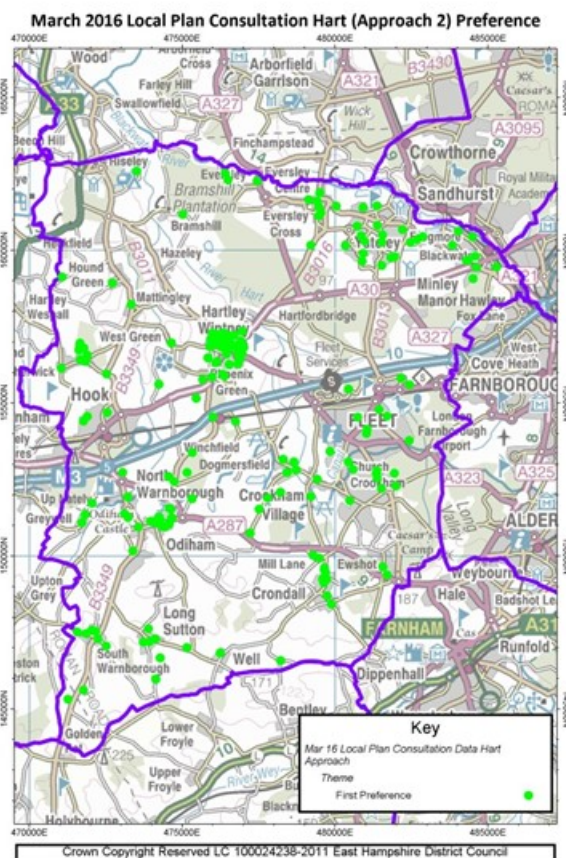
Approach I - Disperse development throughout the towns and villages in the following parishes: Blackwater & Hawley, Crondall, Church Crookham, Crookham Village, Dogmersfield, Elvetham Heath, Eversley, Ewshot, Fleet, Hartley Wintney, Heckfield, Hook, Rotherwick.

The following three maps show distribution of preferences for Approach I within the district, where 1 (green) is the most preferred and 3 (red) is the least preferred



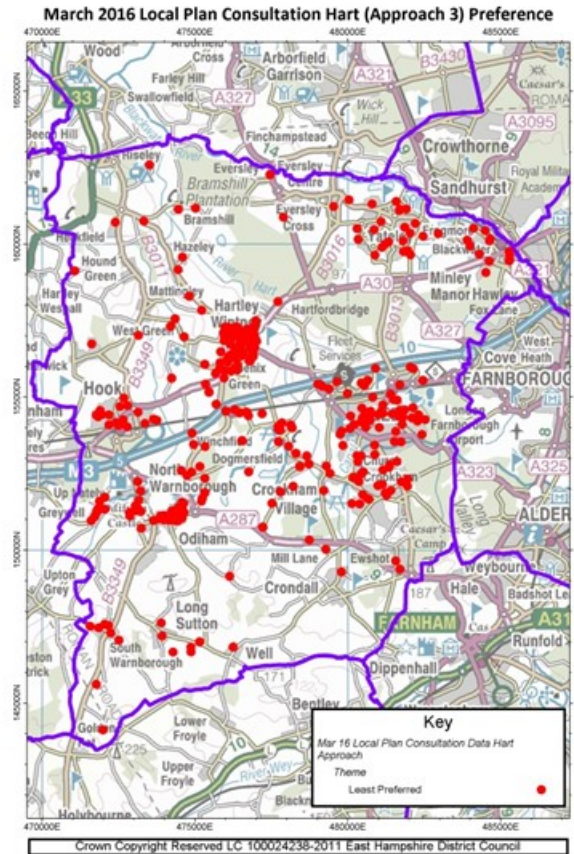
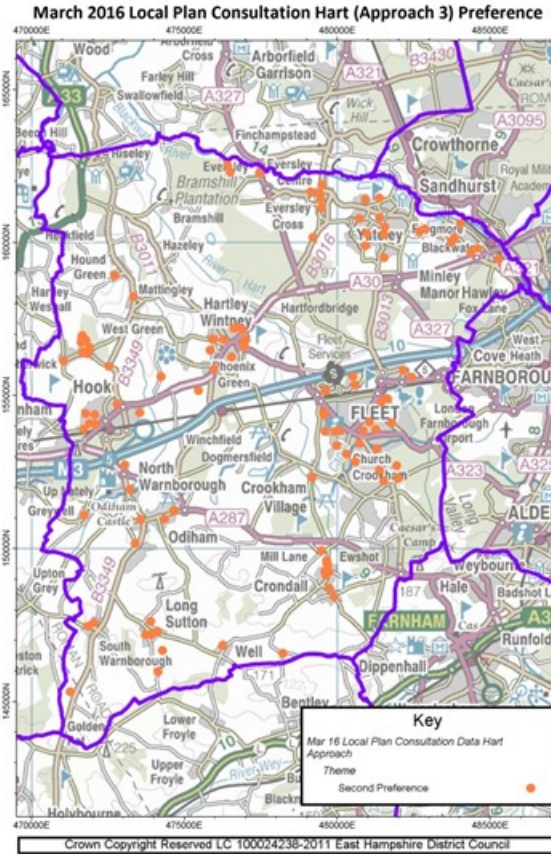
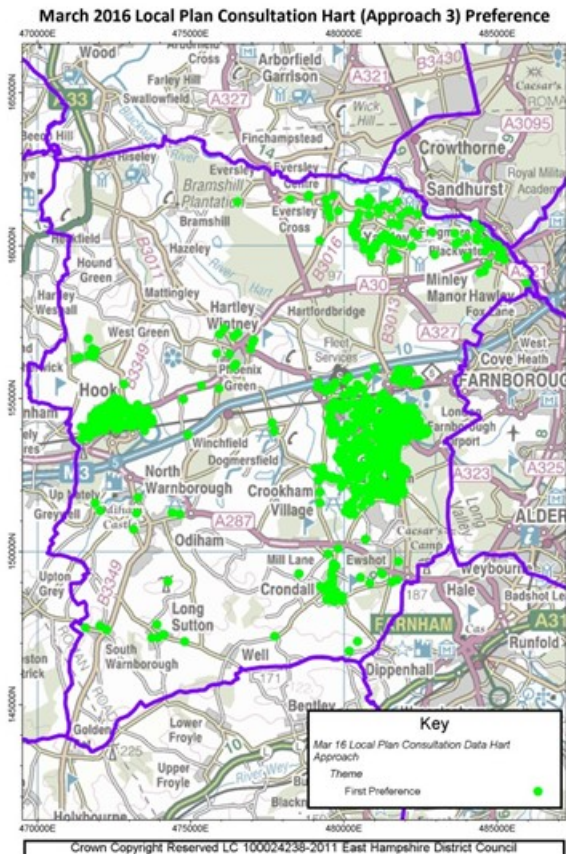
Approach 2 - Strategic Urban Extensions at main settlements (West of Hook, Pale Lane Farm adjacent to Elvetham Heath and land west of Fleet)

The following three maps show the distribution of preferences for Approach 2 within the district, where 1 (green) is the most preferred and 3 (red) is the least preferred



Approach 3 - A new settlement at Winchfield

The following three maps show the distribution of preferences for Approach 3 within the district, where 1 (green) is the most preferred and 4 (red) is the least preferred



Question 5 - Combined Approaches

Question 5 dealt with the issue about if it were necessary to combine approaches to meet Hart's housing requirements which combinations did the respondent prefer? Respondents were asked to rank their choice in order of preference

Approach 4 - Combine Approaches 1 and 2 - Disperse development throughout the towns and villages across the district and Strategic Urban Extensions at main settlements

Approach 5 - Combine Approaches 2 and 3 - Strategic Urban Extensions at main settlements and a new settlement at Winchfield

Approach 6 - Combine Approaches 3 and 1 - A new settlement at Winchfield and disperse development throughout the towns and villages across the district

Approach 7 - Combine all three approaches - Disperse development throughout the towns and villages across the district and Strategic Urban Extensions at main settlements and a new settlement at Winchfield

4,480 respondents answered Question 5. **4,030** were from respondents with postcodes that were within the District boundary. **414** responses were from outside the District and **36** responses gave post codes that could not be matched.

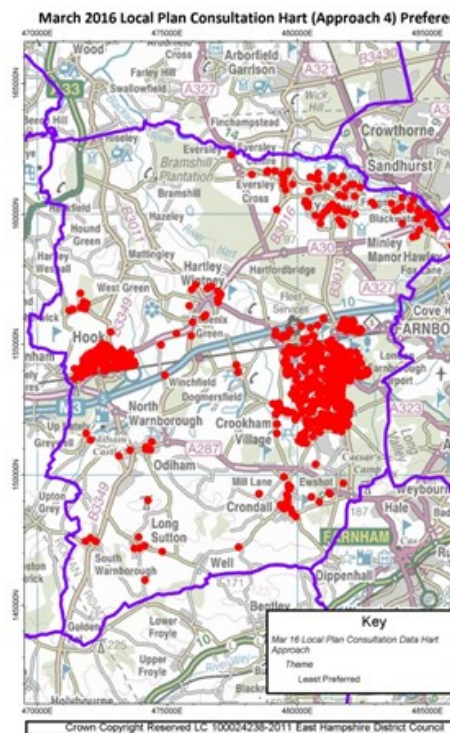
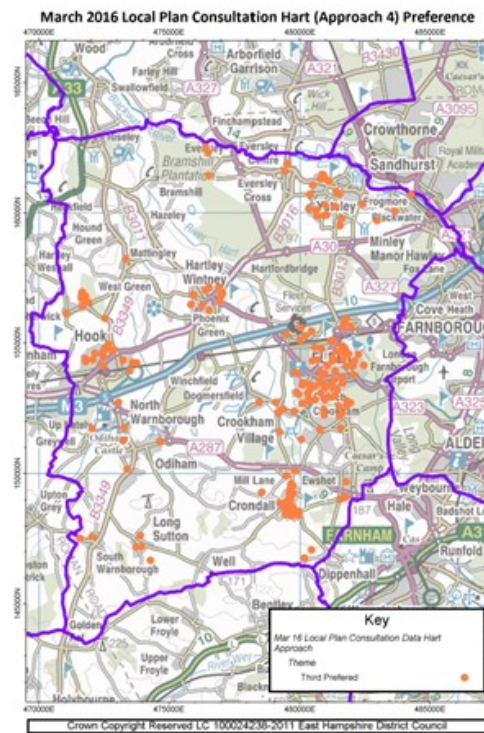
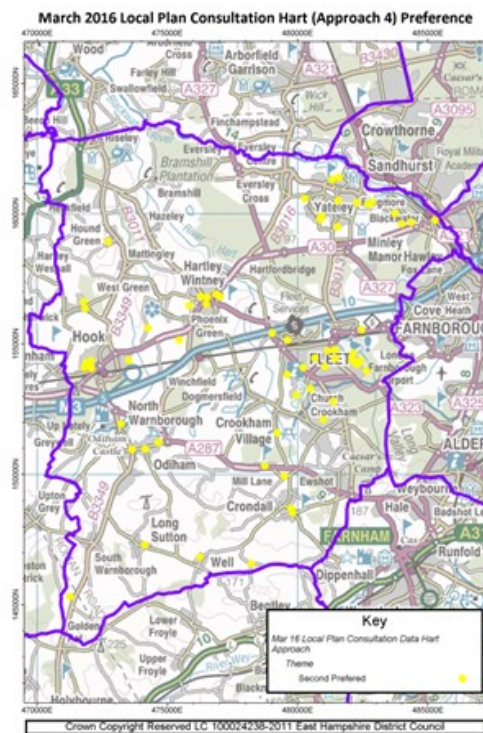
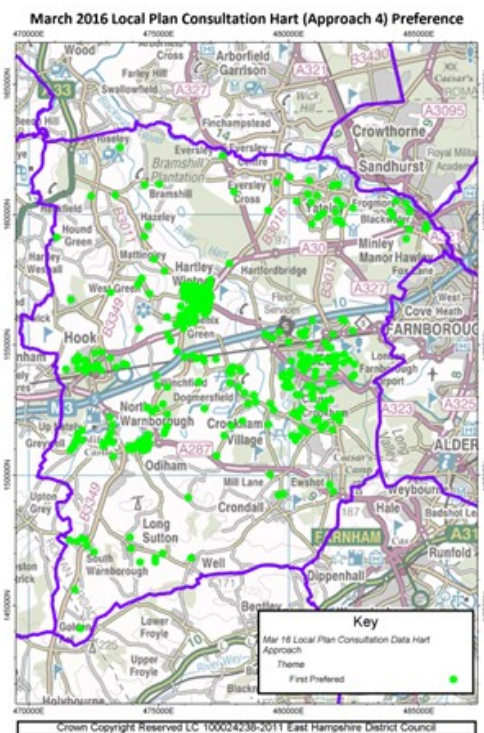
Respondents were asked to rank their choice in order of preference (1 = most preferred to 4 = least preferred).

		(First preference.....Least preferred)			
		1 ●	2 ●	3 ●	4 ●
Approach 4	Combine Approaches 1 and 2	1,573 (35%)	125 (3%)	461 (10%)	2,321 (52%)
Approach 5	Combine Approaches 2 and 3	931 (21%)	1,456 (33%)	1,455 (32%)	638 (14%)
Approach 6	Combine Approaches 3 and 1	1,810 (40%)	696 (16%)	1,158 (26%)	816 (18%)
Approach 7	Combine all three approaches	166 (4%)	2,203 (49%)	1,406 (31%)	705 (16%)

NB all percentages rounded to the nearest whole number.

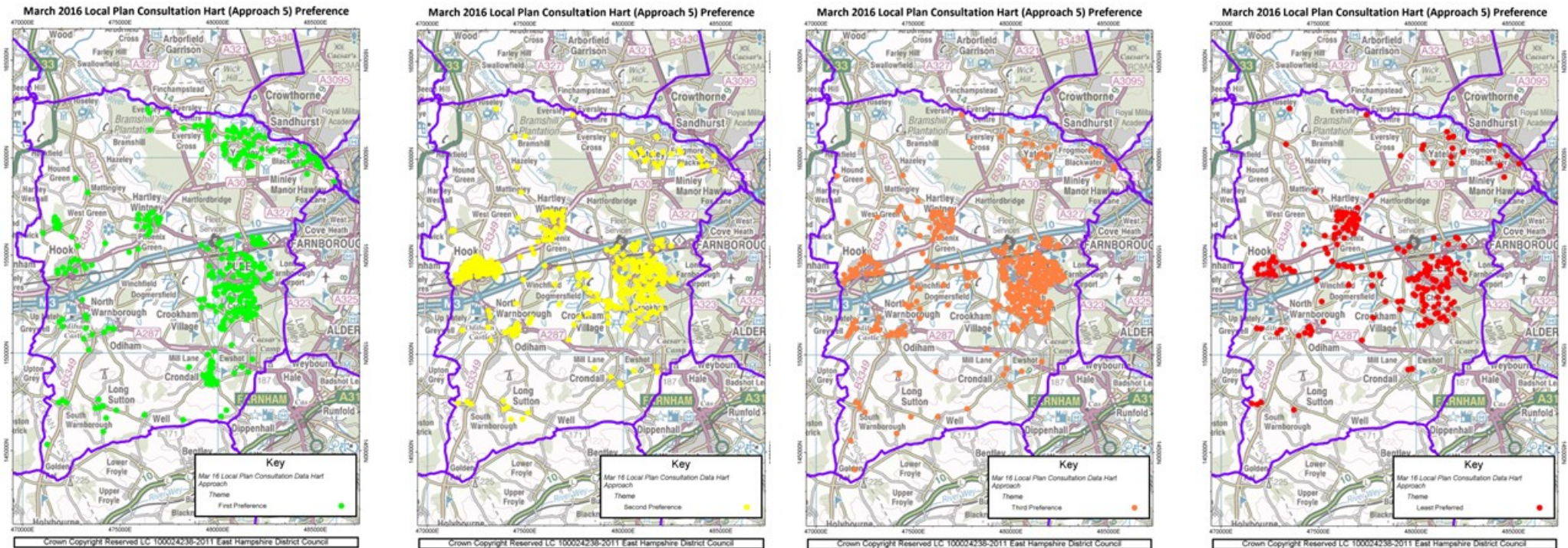
Approach 4 - Combine approaches 1 and 2: Disperse development throughout towns and villages and strategic urban extensions at main settlements

The following four maps show the distribution of preferences for Approach 4 within the district, where 1 (green) is the most preferred and 4 (red) is the least preferred



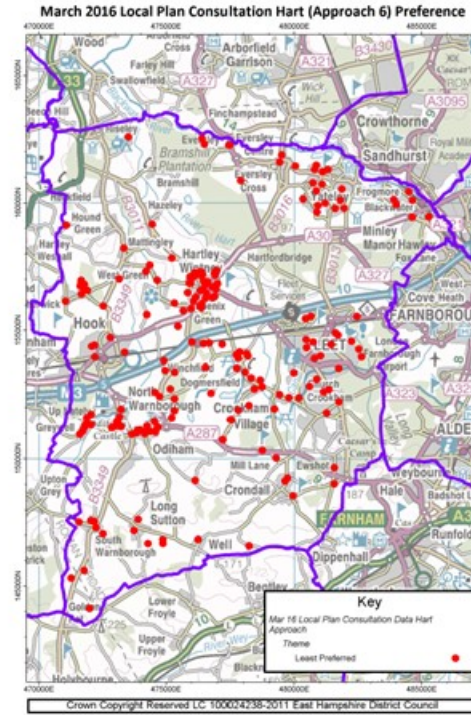
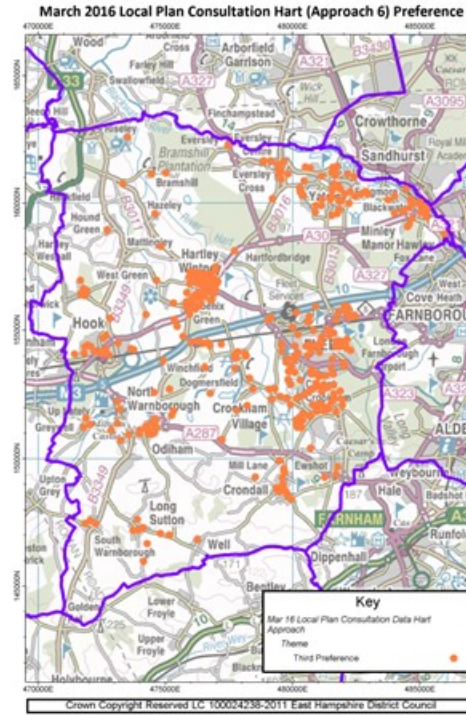
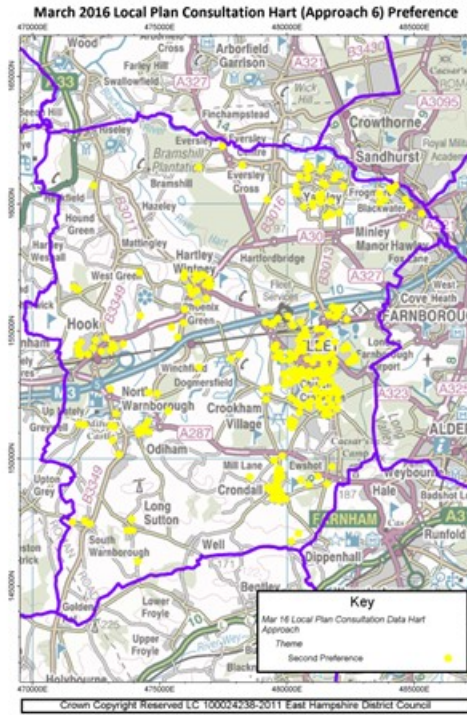
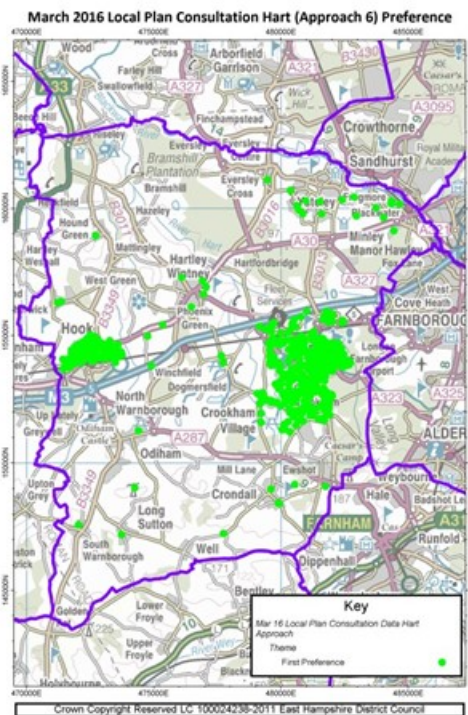
Approach 5 - Combine approaches 2 and 3: Strategic urban extensions at main settlements and a new settlement at Winchfield

The following four maps show the distribution of preferences for Approach 5 within the district, where 1 (green) is the most preferred and 4 (red) is the least preferred



Approach 6 - Combine approaches 3 and 1: A new settlement at Winchfield and Disperse development throughout the towns and villages

The following four maps show the distribution of preferences for Approach 6 within the district, where 1 (green) is the most preferred and 4 (red) is the least preferred



Approach 7 - Combine all 3 approaches: Disperse development throughout towns and villages, and Strategic urban extensions at main settlements and a new settlement at Winchfield

The following four maps show the distribution of preferences for Approach 7 within the district, where 1 (green) is the most preferred and 4 (red) is the least preferred

