

## **Draft Infrastructure Plan**

**June 2015**

## Contents

# Rushmoor Infrastructure Plan

<b>1 Introduction .....</b>	<b>2</b>
1.1 Purpose of this Plan .....	2
1.2 Key elements of this Plan .....	2
1.3 What stage are we at now? .....	2
1.4 Document Structure .....	3
1.5 How have we prepared the draft IP? .....	3
1.6 Further Information .....	4
<b>2 Policy Context .....</b>	<b>5</b>
<b>3 Definitions .....</b>	<b>6</b>
<b>4 Future Growth in Rushmoor .....</b>	<b>7</b>
<b>5 Evidence from other Infrastructure Studies .....</b>	<b>9</b>
<b>6 Recent Infrastructure Developments .....</b>	<b>12</b>
<b>7 Summary of key infrastructure to be provided .....</b>	<b>14</b>
<b>8 Transport Infrastructure .....</b>	<b>15</b>
<b>9 Utilities and Waste .....</b>	<b>25</b>
<b>10 Education .....</b>	<b>32</b>
<b>11 Health Care .....</b>	<b>38</b>
<b>12 Community Services/Facilities .....</b>	<b>42</b>
<b>13 Emergency Services .....</b>	<b>48</b>
<b>14 Cultural/Historical Assets .....</b>	<b>52</b>
<b>15 Wellesley .....</b>	<b>55</b>
<b>16 Green Infrastructure .....</b>	<b>60</b>

## 1 Introduction

# 1 Introduction

## 1.1 Purpose of this Plan

**1.1** Rushmoor Borough Council is currently preparing long term planning policies to guide the scale, location and type of future development in the Borough. An important part of this process is to establish the infrastructure, such as schools, health facilities, open space and transport improvements, that might be required to support future development and meet the needs of existing and future residents.

**1.2** The purpose of this Infrastructure Plan (IP) is therefore to provide background evidence as to the key elements of physical and social infrastructure likely to be needed in the Borough up to 2032 to support delivery of the Rushmoor Local Plan. The IP includes a delivery schedule that sets out who will provide the infrastructure and when it will be provided.

**1.3** The IP should be read in conjunction with the Rushmoor Local Plan Preferred Approach document, and supplementary evidence. These can be found at [www.rushmoor.gov.uk/newlocalplan](http://www.rushmoor.gov.uk/newlocalplan).

**This product includes mapping data licensed from Ordnance Survey with the permission of the Controller of Her Majesty's Stationery Office. Crown Copyright 2015. All Rights Reserved. Rushmoor BC 100024264.**

## 1.2 Key elements of this Plan

**1.4** The IP identifies the current baseline in relation to existing infrastructure in the Borough. It also identifies main areas of responsibilities and where possible, details of planned future provision. Where appropriate, facilities are mapped.

**1.5** The main area of additional infrastructure provision in the Borough up to 2032 will be in relation to the development of about 3,850 new homes at Aldershot Urban Extension (Wellesley).

**1.6** The IP will be kept as a 'live' document following adoption of the Rushmoor Local Plan. That means that with its partners, the Council will seek to keep the IP as up to date as possible. Delivery of the Infrastructure Plan will be reported on on an annual basis through the Authority Monitoring Report.

## 1.3 What stage are we at now?

**1.7** The Council is consulting on the Preferred Approach stage of the Rushmoor Local Plan DPD. It is anticipated that a further consultation on the draft Submission stage will take place in January/February 2016 with submission of the document earmarked for April 2016.

**1.8** As far as possible the IP has been prepared with the involvement of relevant stakeholders, however as this will be a 'live' document it is envisaged that there will be ongoing discussions with stakeholders in order to maintain it as an up to date document.

## 1.4 Document Structure

**1.9** Sections 2 to 7 provide context for future infrastructure requirements. Sections 8 to 14 contain templates which show the following for different types of infrastructure in the Borough:

- An audit of existing facilities, including mapping where appropriate
- Capacity of existing facilities where possible
- Details of any known or planned provision
- Details of any key issues for Rushmoor
- Implications for the Rushmoor Local Plan DPD

**1.10** Section 15 sets out the infrastructure requirements to support the delivery of 3,850 new homes at Aldershot Urban Extension (Wellesley), and section 16 sets out some issues relating to green infrastructure provision in the Borough.

## 1.5 How have we prepared the draft IP?

**1.11** At this stage, the IP and the Delivery Plan are based on information that the Council has managed to obtain from the sources listed in later sections and from meetings with stakeholders. Subsequent information received from stakeholders and other sources will be used to produce a revised version of the IP in support of the draft Submission Local Plan DPD.

**1.12** The Planning Advisory Service (PAS) have produced guidance on preparing Infrastructure Plans 'A steps approach to infrastructure planning and delivery'<sup>(1)</sup>. The table below shows how we are progressing against each of the steps.

Steps	Progress
<b>Step 1: Vision/Policy Context</b> Set out a long term vision for the area and establish a sustainable community strategy delivery strategy.	A long term vision for the area is set out in the Rushmoor Sustainable Community Strategy and in the emerging Local Plan.
<b>Step 2: Governance</b> Set up a group for infrastructure and asset management/establish working arrangements between stakeholders.	Future arrangements for involvement in preparing, updating and monitoring the IP are currently being discussed with relevant partners.
<b>Step 3: Evidence Gathering</b> Undertake a resource overview, and identify public sector capital programme commitments and private sector developments, potential for joint use and use of public sector assets as a resource base for local area regeneration and redevelopment.	Existing commitments from the Council and partners capital programmes have been sought. A review of plans and programmes has been undertaken where possible as set out in the relevant templates. This will be developed as part of the ongoing review of the IP.

1 available at [www.pas.gov.uk](http://www.pas.gov.uk)

## 1 Introduction

Steps	Progress
<b>Step 4: Standards and Deficits</b> Identify infrastructure delivery standards and use them to identify surplus and deficits and requirements for strategic sites.	Where appropriate, and available, infrastructure delivery standards are provided and capacity of existing facilities provided. These have also been used in the preparation of guidance for development at Aldershot Urban Extension (Wellesley).
<b>Step 5: Infrastructure Delivery Plan</b> Identify infrastructure requirements/introduce viability testing/undertake SA of infrastructure delivery plan schedule.	To be provided in support of the Draft Submission version of the Local Plan.
<b>Step 6: Validation</b> Consult on infrastructure delivery plan schedule/prepare an infrastructure delivery strategy/undertake risk assessment	This is the first stage of consultation on the Infrastructure Plan.
<b>Step 7: Delivery</b> Implement infrastructure delivery programme/undertake annual monitoring and review progress on delivery.	Ongoing. Annual progress to be reported through the Authority Monitoring Report.

## 1.6 Further Information

**1.13** You can find out more about the preparation of the Local Plan, including background studies, on the Council's website at [www.rushmoor.gov.uk/newlocalplan](http://www.rushmoor.gov.uk/newlocalplan).

**1.14** Alternatively please telephone the Planning Policy team on 01252 398789 or email us at [plan@rushmoor.gov.uk](mailto:plan@rushmoor.gov.uk) if you have any queries about the Infrastructure Plan or any other aspect of the Local Plan.

## 2 Policy Context

### National Guidance

**2.1** National planning policy guidance on infrastructure planning is set out in the National Planning Policy Framework (NPPF). Paragraph 156 states that the Local Plan should include policies to deliver the provision of infrastructure for transport, telecommunications, waste management, water supply, wastewater, flood risk and the provision of health, community and cultural infrastructure. Paragraph 157 states that Local Plans should plan positively for the development and infrastructure required in the area to meet the objectives, principles and policies of the NPPF. Paragraph 162 states that local planning authorities should work with other authorities and providers to assess the quality and capacity of infrastructure for transport, water supply, wastewater and its treatment, energy (including heat), telecommunications, utilities, waste, health, social care, education, flood risk and coastal change management, and its ability to meet forecast demands.

### Links with other Initiatives

**2.2** Work on the provision of infrastructure will be progressed through engagement with the Local Enterprise Partnership. Rushmoor is part of the Enterprise M3 LEP which covers parts of Hampshire and Surrey.

3

Definitions

3

Definitions

What do we mean by "Infrastructure"?

**3.1** As set out previously, paragraph 162 of the NPPF outlines the types of infrastructure that will need to be considered, and additional guidance is provided by the Planning Advisory Service.

**3.2** For the purposes of the Rushmoor Infrastructure Plan, the following types of infrastructure have been included within the study:

Transport	Utilities and Waste	Social Infrastructure	Culture and Leisure
Public Transport - bus and rail	Gas	Health	Religious Facilities
Highways	Water	Education	Libraries
Walking and Cycling Routes	Electricity	Emergency Services	Cultural Facilities
Taxis	Telecommunications	Community Services and Facilities	Green Infrastructure
Farnborough Airport	Waste		

## Future Growth in Rushmoor 4

### 4 Future Growth in Rushmoor

**4.1** Future infrastructure requirements in the Borough will be associated largely with the additional needs generated from new development. The following section sets out a brief overview of forecast population increases and identifies some of the key types and areas of growth over the plan period.

#### New Homes

**4.2** The Strategic Housing Market Assessment (SHMA 2014) identified an Objectively Assessed Need for 9,822 homes in Rushmoor between 2011 and 2032. Capacity work undertaken in support of the Local Plan has indicated that approximately 8,200 homes can be delivered in Rushmoor. Of these, 3,850 homes have been permitted as part of the Aldershot Urban Extension (Wellesley) development, leaving a requirement for an additional 4,350 homes to be built elsewhere in the Borough. The Local Plan sets out the following levels of residential development up to 2032:

- About 3,850 new homes at Wellesley;
- About 1,700 new homes in Aldershot (outside of Wellesley)
- About 2,650 new homes in Farnborough

**4.3** Part of the background evidence to these figures was the preparation of a Strategic Housing Land Availability Assessment which identified the potential capacity for new housing in the Borough up to 2029. This is available at [www.rushmoor.gov.uk/newlocalplan](http://www.rushmoor.gov.uk/newlocalplan). This shows the potential distribution of new housing across the Borough.

#### Town Centre Uses

**4.4** Aldershot and Farnborough town centres are identified in the Local Plan as the focus for a range of town centre uses. These are likely to include most significantly retail and residential developments.

**4.5** There are plans for new development in Aldershot and Farnborough town centres, commensurate with the capacity outlined in the Retail, Leisure and Town Centres Study (2015). Long term additional capacity by 2032 for Class A1 to A5 floorspace is up to 21,600sqm gross. However, the study sets out that these long-term projections should be treated with caution.

**4.6** Shorter term projections are more reliable and these are set out below:

- Aldershot - 2,892sqm (gross) by 2022
- Farnborough - 1,583sqm (gross) by 2022

#### Employment

**4.7** Regarding future employment growth, the Local Plan identifies Strategic and Locally Important Employment Sites that ensure that the employment land needs of the Borough and wider Hart, Rushmoor and Surrey Heath Functional Economic Area (FEA) can be met. These sites will contribute to meeting the forecast increase in the total number of B-Class jobs of 12,500 in the FEA over the plan period. Development in Farnborough, which is designated as a 'growth town' within the wider Enterprise M3 Sci-Tech corridor, will make a significant contribution towards meeting this growth.

#### Population Growth



## 4 Future Growth in Rushmoor

**4.8** Hampshire County Council previously produced a set of Long Term Population Projections as set out in Table 4.1 below in support of the adopted Core Strategy. In the years 2001 - 2027 it showed a marked increase in the over 65 population of approximately 50%. A further population projection has been requested to support the emerging Local Plan and this will be provided in a later iteration of the Infrastructure Plan document.

### 4.9

Rushmoor	2001	2006	2011	2016	2021	2027
0-4	6,330	6,080	6,900	6,780	6,890	6,970
5-15	13,172	13,010	12,560	12,690	13,240	13,550
16-29	19,124	20,610	22,640	22,220	21,480	21,480
30-44	23,053	23,130	22,710	22,380	23,290	24,560
45-64	18,754	19,940	21,740	22,160	22,540	22,210
65-74	5,587	5,660	6,060	7,070	7,400	7,710
75-84	3,662	3,850	4,010	4,310	4,790	5,740
85+	1,292	1,430	1,690	1,950	2,290	2,820
Total	90,974	93,710	98,310	99,560	101,920	105,040

**Table 4.1 Population Projections 2001- 2027 Source : Hampshire County Council**

*Figures rounded to the nearest 10 from 2006 onwards.*

### Proposed Major Developments

Major residential development in the Borough will take place over the plan period at Wellesley, a surplus military site located to the north of Aldershot Town Centre. Between 2014 and 2032 this site will accommodate about 3,850 new homes, some small scale employment development, and associated infrastructure. Details of infrastructure needed to support development are identified through the agreed Section 106 obligations as set out in Section 15 of this document.

The Crescent in Southwood, Farnborough is a proposed allocation for approximately 150 homes and Meudon House, Farnborough is a proposed allocation for approximately 100 homes.

## Evidence from other Infrastructure Studies 5

## 5 Evidence from other Infrastructure Studies

### Hampshire Strategic Infrastructure Statement

**5.1** The Hampshire Strategic Infrastructure Statement (2013) provides a position statement, detailing the infrastructure requirements identified by Hampshire County Council and its partners. It focuses on the infrastructure types which Hampshire County Council and its public sector providers have a role in planning, coordinating and in some instances also delivering.

**5.2** The following infrastructure types are considered:

- Transport
- Schools
- Countryside schemes
- Waste & Energy infrastructure
- Flood risk management infrastructure
- Social & Community infrastructure (libraries; extra care housing; health care provision; police service; fire and rescue service).

**5.3** The Statement presents information currently available relating to the additional infrastructure needed to support future development in each Hampshire district. is broken down into Local Authority

Infrastructure type	Types of schemes	Estimated Total Costs	Estimated Funding Shortfall
<b>Transport</b>	Strategic transport schemes across Hampshire identified in district Transport Statements	£449,200,000	£426,250,000
	Schemes across Hampshire identified in district Transport Statements	£295,300,000	£250,300,000
<b>Schools</b>	Provision of new school places to support new communities and projected population change	£610,000,000	£486,300,000
<b>Social &amp; Community</b>	Up to 4,565 units of Extra Care Housing across Hampshire	£724,833,000	£679,833,000
<b>Social &amp; Community</b>	Various schemes to refurbish or relocate libraries which are not large enough to serve the local community	£46,500,000	£46,500,000
<b>Social &amp; Community</b>	Delivery of improved broadband access, likely to include, fibre, copper, satellite, wireless and mobile phone technologies based on economic and service delivery factors	To be determined	To be determined
<b>Countryside schemes</b>	Management and improvement to forms of access to Hampshire's countryside (includes sustainable transport schemes)	To be determined	To be determined

## 5 Evidence from other Infrastructure Studies

Infrastructure type	Types of schemes	Estimated Total Costs	Estimated Funding Shortfall
Transport	Strategic transport schemes across Hampshire identified in district Transport Statements	£449,200,000	£426,250,000
	Schemes across Hampshire identified in district Transport Statements	£295,300,000	£250,300,000
Schools	Provision of new school places to support new communities and projected population change	£610,000,000	£486,300,000
Waste management	Investment in Household Waste Recycling Centres	£14,600,000	£2,000,000
Flood risk management	Local flood risk management schemes	To be determined	To be determined
Total		£2,162,000,000	£1,909,000,000

Table 5.1 Identified strategic infrastructure needs in Hampshire (February 2013)

### Other Relevant Plans and Strategies

**5.4** The following table sets out a number of ongoing plans and strategies that will, over time help to determine the need for, and commitment to delivering infrastructure in the Borough.

Plan/Strategy	Comment	Timescale
Local Transport Plan 3	Produced by Hampshire County Council, LTP3 will comprise a long term strategy, containing the strategic priorities, policies and approach to improving transport in Hampshire up to 2031, and a four year Implementation Plan (2011/12 to 2014/15).	Adopted.
Aldershot Town Access Plan	Prepared by Hampshire County Council, the aim of the TAP is to help make Aldershot a more attractive place to visit, to encourage access by sustainable transport modes, providing transport infrastructure to facilitate development, to promote social inclusion, and to integrate transport proposals with land use development.  Once adopted, improvements to address these issues will be included in the transport improvements list which is linked to Rushmoor Borough Council's Transport Contributions Supplementary Planning Document (SPD). Section 106 agreements will be used to require	Adopted

## Evidence from other Infrastructure Studies 5

Plan/Strategy	Comment	Timescale
	contributions from developments that meet the requirements of the Transport Contributions SPD to support the implementation of the TAP.	
Farnborough Town Access Plan	To be prepared by HCC in conjunction with RBC. Work has started on the early stages of the Farnborough TAP. It will be used in the same way as above.	Adopted
Surface Water Management Plan	A joint strategy led by HCC to identify surface water flood risks and to identify potential mitigation and delivery and funding options.	Draft version for Rushmoor completed

**5.5** The evidence base on infrastructure provision will therefore be constantly evolving and will enable the Infrastructure Plan to be kept up to date.

## Funding Sources

**5.6** Where possible the IP has tried to identify funding sources. However, at the time of writing there are significant changes to the amount and allocation of public funding so this will require further clarification. Funding sources will be developed further as part of the evidence base for the development of a Community Infrastructure Levy (CIL) charging schedule. Whilst not specifically referenced in later sections, CIL may therefore be a potential funding source for the areas of infrastructure set out later in this document.

## 6 Recent Infrastructure Developments

### 6 Recent Infrastructure Developments

**6.1** Recent significant infrastructure projects completed or commenced in the Borough have included:

- The Aldershot Centre for **Health** opened in 2008 providing a new purpose built health centre for Aldershot. It combines Army and NHS primary medical services and replaced the old Aldershot Health Centre and Aldershot Garrison medical facilities. The Centre for Health brings together GP's, dental services, clinicians, counsellors, community nurses, Army doctors and a pharmacy.
- A replacement Drs Surgery at Princes Gardens Aldershot opened early 2011
- **Transport** improvements:
  - Completion of the Airport Southern Access road
  - Bus Quality Partnership bus services;
  - Small scale footway/cycleway improvements and safety improvement schemes.
  - Farnborough Station - new bridge and forecourt remodelling to provide bus and taxi lanes. New multi-storey car park to accommodate additional vehicles.
  - Junction improvements at Queens Roundabout
  - New Cove Brook cycleway
- **Community/leisure/recreation** facility improvements:
  - New pavilion at Southwood playing fields
  - Local play areas(including North Town, Pinewood Park, Water Lane)
  - The development of Southwood Woodlands as a SANG <sup>(2)</sup>
  - The development of Hawley Meadows/Blackwater Park as a SANG
  - The development of Rowhill as a SANG
  - Delivery of the Runways End Activity Centre - a 50 bed dormitory/classroom/kitchens/meeting rooms/low ropes and high ropes course, camping for 200, multi use activity hall, and a canoe store with changing rooms.
  - Aldershot Park playground (£240,000 improvement scheme funded by Big Lottery, Playbuilder, HCC and S106)
  - Upgraded all weather pitches at the Lido
  - New all weather pitches at Connaught School
- **Educational** improvements:
  - New facilities at Farnborough 6th form college
  - New facilities at the Technical College
- **Utilities** improvements:
  - Gas service replacement of all gas mains in Aldershot with plastic pipes.
  - Gas mains replacement in Farnborough

## Recent Infrastructure Developments 6

- Improvements to water mains in Aldershot
- BT Fibre optics network underway
- **Private investment** in:
  - Farnborough town centre - £53 million redevelopment including a new Sainsbury's store and Travelodge (both opened December 2010), and a 7 screen cinema (opened May 2015) and restaurants.
  - Farnborough Business Park - additional office space due to be completed mid 2015.
  - Aldershot Town Centre - Westgate development comprising cinema, restaurants, hotel and supermarket (opened 2012).
- **Defence Estates** investment in:
  - A £325 million scheme providing 2,425 new or refurbished single living accommodation spaces and associated uses at the Military Town.

## 7 Summary of key infrastructure to be provided

### 7 Summary of key infrastructure to be provided

**7.1** Over the plan period the key requirement for new infrastructure will be to support the development of around 3,850 new homes at Wellesley. This is set out in more detail in section 15 of this document. In addition, major changes over the plan period will take place at Aldershot and Farnborough town centres. The following table summarises the key infrastructure expected to be delivered in the Borough over the plan period, based on information as at May 2015.

**7.2** The elements of infrastructure considered to be most essential to deliver the Local Plan are:

Infrastructure	Comments
Delivery of Suitable Alternative Natural Greenspace	<p>This is essential to enable the delivery of new homes, including affordable homes.</p> <p>Wellesley has its own agreed bespoke solution.</p> <p>Capacity at Southwood, Hawley Meadows and Rowhill SANG is limited and other options are being explored to support the delivery of the Local Plan.</p>
Infrastructure at Wellesley	Detailed work has been carried out on identifying infrastructure needs for Wellesley and has been incorporated into the adopted SPD and the Heads of Terms in the s106 agreement.
Sustainable transport measures	This is essential to mitigate the air quality impacts of additional traffic on the Thames Basin Heaths SPA and to address potential congestion on the local transport network. In addition to a range of solutions at Wellesley, the implementation of Town Access Plans for Aldershot and Farnborough and specific programmes of work will encourage the use of alternative modes of travel. The TAP's include a series of improvements to deliver these aims and objectives. These are included in the Transport Improvements list which is linked to the Council Transport Contributions Supplementary Planning Document (SPD).
Green Infrastructure	This is essential to help to deliver the Sustainable Community Plan vision as well as that of the Local Plan. This is particularly important as the Open Spaces Study has shown a shortage of open space across the Borough.
Educational Facilities	Specific facilities for pre-school and primary education at Wellesley will be provided by or funded by developers. Elsewhere in the Borough there are potentially forecast capacity issues particularly at primary school level which are being discussed with Hampshire County Council.

## Transport Infrastructure 8

## 8 Transport Infrastructure

**8.1** The following tables set out the existing and future situation in relation to the provision of the Strategic Highways network, the non strategic road network, rail services, Farnborough airport, bus services, taxis and walking and cycling.

### Strategic Highways Network

Lead Organisation	Highways England
Existing provision	Highways England is responsible for the operation and stewardship of the strategic road network (SRN) in England on behalf of the Secretary of State for Transport. In Rushmoor the SRN is represented by the M3 motorway.
Known Planned Provision (and funding)	<p>Highways England is working to improve the M3 between junctions 2 to 4a.</p> <p>The M3 Junctions 2 to 4a is part of a major strategic road network connecting people communities and businesses, carrying over 130,000 vehicles per day.</p> <p>Improvements are being made to this road as it currently suffers from high levels of congestion and unpredictable journey times.</p> <p>Work has started to introduce a smart motorway scheme, using a range of technologies which have been successfully used in other parts of the country, such as the recently completed smart motorway scheme on the M25 motorway.</p> <p>This scheme will relieve congestion and smooth the flow of traffic, improving journey times. These benefits will support economic development in the region by providing much needed capacity on the motorway.</p> <p>The estimated cost of this work is between £138m - £198m with completion expected in the last quarter of 2016.</p>
Key Issues for Rushmoor	Highways England concludes that if no action is taken, current congestion levels on the M3 can be expected to increase.
Implications for the Rushmoor Plan	The projected increase in housing may increase traffic growth with a greater impact on the M3 motorway. The combined effect of growth in neighbouring authorities with that predicted for Rushmoor needs to be considered and an assessment of the cumulative impact of future



## 8 Transport Infrastructure

Lead Organisation	Highways England
	development on part of the M3 is currently being prepared in conjunction with the Highways England and Hampshire County Councils.
Sources of Funding	Highways Agency funding comes from central government revenue and capital funding. Developer contributions.
Evidence	Highways Agency M3 smart motorways  Emerging Transport Assessment in support of the Rushmoor Local Plan

### Non Strategic Road Network

Lead Organisation	Hampshire County Council/MoD/Private
Existing provision	<p>The County Council is the highway authority in Rushmoor and is responsible for the maintenance, management and improvement of all publicly adopted highways (excluding the M3).</p> <p>The MoD own and manage a number of roads within the military town.</p> <p>There are also several private roads in the Borough, for example at Farnborough business park and Farnborough Aerospace Park</p>
Known Planned Provision (and funding)	<p>A number of schemes are identified within the Hampshire Strategic Infrastructure Statement Version 1 (February 2013). These include strategic improvements such as the A3011 Lynchford Road Corridor, signalisation of the Queens roundabout and A325 Corridor improvements. An identified shortfall at the time of publication was £8.1m. However, £3.3m of this shortfall was attributed to the Queens Roundabout scheme which has since commenced.</p> <p>Local road and access improvements include traffic management measures, safer routes to school improvements and schemes at Victoria Road and Birchett Road. The estimated funding shortfall for these schemes was approx. £6m at the time of publication.</p>

## Transport Infrastructure 8

<b>Lead Organisation</b>	<b>Hampshire County Council/MoD/Private</b>
Key Issues for Rushmoor	This information will be updated once the Transport Assessment in support of the Local Plan has been completed.
Implications for the Rushmoor Plan	The projected increase in housing and employment development may increase traffic growth, having implications for the non strategic network including junctions which require access to the motorway.
Sources of Funding	<p>The County Council will seek funding from development contributions to support any identified deficit;</p> <p>Applications for Government funding (e.g. Growing Places Fund) to deliver local transport schemes.</p>
Evidence	<p>Hampshire County Council Strategic Infrastructure Statement</p> <p>Emerging Transport Assessment in support of the Rushmoor Local Plan</p>

## Rail Services

<b>Lead Organisation</b>	<b>Network Rail</b>
Existing provision	<p>Rail operators</p> <p>South West Trains - Waterloo to Weymouth line and Waterloo to Alton (franchise to run until 2019)</p> <p>First Great Western - Reading to Redhill (via Guildford) line</p>
Known Planned Provision (and funding)	Network Rail services primarily structured to allow an intensive level of service into Waterloo with maximum capacity at Woking (which is a pinch point in the service).

## 8 Transport Infrastructure

Lead Organisation	Network Rail
	<p>A new decked car park has been constructed at Farnborough railway station providing an extra 243 spaces, also a new western access has been constructed helping to relieve congestion around the station forecourt and improve ingress and egress to the expanded car park.</p> <p>New bike racks and shelters installed at Farnborough.</p> <p>New footbridge at Aldershot station.</p> <p>Signal improvements in the Aldershot area.</p>
Key Issues for Rushmoor	<p>The effect of the rail network into London being at capacity at peak hours has implications on commuting from Rushmoor.</p> <p>Particular constraints that affect this are the layout at approach to Waterloo and the flat junction at Woking.</p> <p>Single line sections of track also restrict capacity at Ash Vale, Farnham and Alton and the approaches to Weymouth and Reading stations.</p> <p>At Farnborough North there is very limited car parking. From Farnborough North there are poor links to the College of technology, the sixth form college and to employment areas.</p> <p>Joint working with neighbouring authorities is required particularly in relation to North Camp and Frimley stations.</p>
Implications for the Rushmoor Plan	<p>The projected increase in housing and employment development and encouragement of alternative modes of transport to the car inevitably increases passenger traffic on the rail network .</p> <p>Better links between key public transport and walking and cycling links to new development are required.</p>
Sources of Funding	<p>Network Rail is paid by the train operating company for 'access' to the network, a contractual agreement for the number, timing and type of train the operator wants to run. The operator receives income through the fares that passengers pay and from support grants made either by</p>

## Transport Infrastructure 8

Lead Organisation	Network Rail
	<p>central government or sometimes by local authorities and passenger transport executives that want to support particular loss-making services.</p> <p>Current train operating company (SWT) has the franchise until 2019. Opportunities for funding infrastructure improvements may come from Network Rail, train operators or local authorities (including from developers' contributions).</p>
Evidence	Network Rail Route Utilisation Strategy 2011.

## Farnborough Airport

Lead Organisation/Provider	TAG Farnborough Airport Ltd
Existing provision	<p>Following its transfer from the Ministry of Defence to a privately owned and operated business aviation airport, TAG Aviation have already made significant infrastructure improvements in the Airport's facilities. This includes a new terminal building and hangar facilities.</p>
Known Planned Provision (and funding)	<p>TAG has purchased 1 Meadow Gate, a 39,000 square foot office building in Farnborough Business Park.</p> <p>Airspace change proposal - TAG Farnborough Airport is undertaking an airspace change proposal (ACP), a formal UK Civil Aviation Authority (CAA) process, in order to introduce a new airspace design in the vicinity of the airport.</p> <p>The purpose of the TAG Farnborough Airport's ACP is to create a new operating environment with the elements of controlled airspace, which would offer all airspace users predictability and consistency of operation. Overall this could further reduce noise and carbon dioxide emissions, improving the environment in and around the airport. It is also set to improve efficiency and enhance safety.</p>
Key Issues for Rushmoor	<p>The Airport meets a specialist business aviation market and does not therefore generate infrastructure pressures that would usually be implicit with the expansion of an airport that offers inclusive charter tour flights etc. Infrastructure has already been put in place at the Airport</p>

## 8 Transport Infrastructure

<b>Lead Organisation/Provider</b>	<b>TAG Farnborough Airport Ltd</b>
	to accommodate an increase in annual air traffic movements to 50,000 per annum.
Implications for the Rushmoor Plan	To ensure that any proposals to change the pattern, nature or number of annual air traffic movements are supported by adequate infrastructure.
Sources of Funding	Farnborough Airport is a privately funded business operation owned by TAG.
Evidence	Information submitted by TAG Farnborough Airport Ltd in support of its 2009 planning application to increase annual air traffic movements.  www.tagfarnborough.com.

### Bus Services

<b>Lead Organisation</b>	<b>Hampshire County Council</b>
Existing provision	Bus operators Stagecoach, Fleet Buzz, Countryliner Private buses serving Nokia and Sun Microsystems
Known Planned Provision (and funding)	Operator bus services provided on a commercial basis, as well as tendered services by the County.  Some routes have been reduced or withdrawn and there have been 2 new routes ( Route 9 & 77) created due to Hampshire County Council funding changes.
Key Issues for Rushmoor	Service improvements to retain journey time reliability and a good service through appropriate bus priority infrastructure and improved buses (following Quality Bus Partnership schemes) have introduced Bus Route 1 (Goldline), Route 6 (Yo Yo) , Route 20 (The Kite).  Voluntary and community services (including school transport) could provide greater flexibility to encourage more use of public transport by providing more customised services.
Implications for the Rushmoor Plan	The projected increase in housing and development and encouragement of alternative modes of transport to the

## Transport Infrastructure 8

<b>Lead Organisation</b>	<b>Hampshire County Council</b>
	car inevitably increases passenger traffic on the bus network.
Sources of Funding	The operator receives income through the fares that passengers pay and from tendered bus service support from Hampshire County Council. Developers' contributions can be sought to support the introduction of bus services for a limited period.
Evidence	Hampshire County Council.  <a href="http://www.stagecoachbus.com">www.stagecoachbus.com</a>

**Taxis**

<b>Lead Organisation</b>	<b>Rushmoor Borough Council, Private operators</b>
Existing Provision	No limits, currently 135 Hackney Carriage licenses and 79 private hire. 10 taxi ranks across the Borough; recent improvements to taxi facilities at Farnborough Main railway station
Known Planned provision (and funding)	Changes dealt with through individual licensing applications.
Key Issues for Rushmoor	Taxis complement other traffic services and are particularly important for the night time economy and for people with disabilities.
Implications for the Rushmoor Plan	One of a range of measures that can improve accessibility.
Sources of Funding	Private finance.
Evidence	Rushmoor Borough Council.

## 8 Transport Infrastructure

### Walking and Cycling

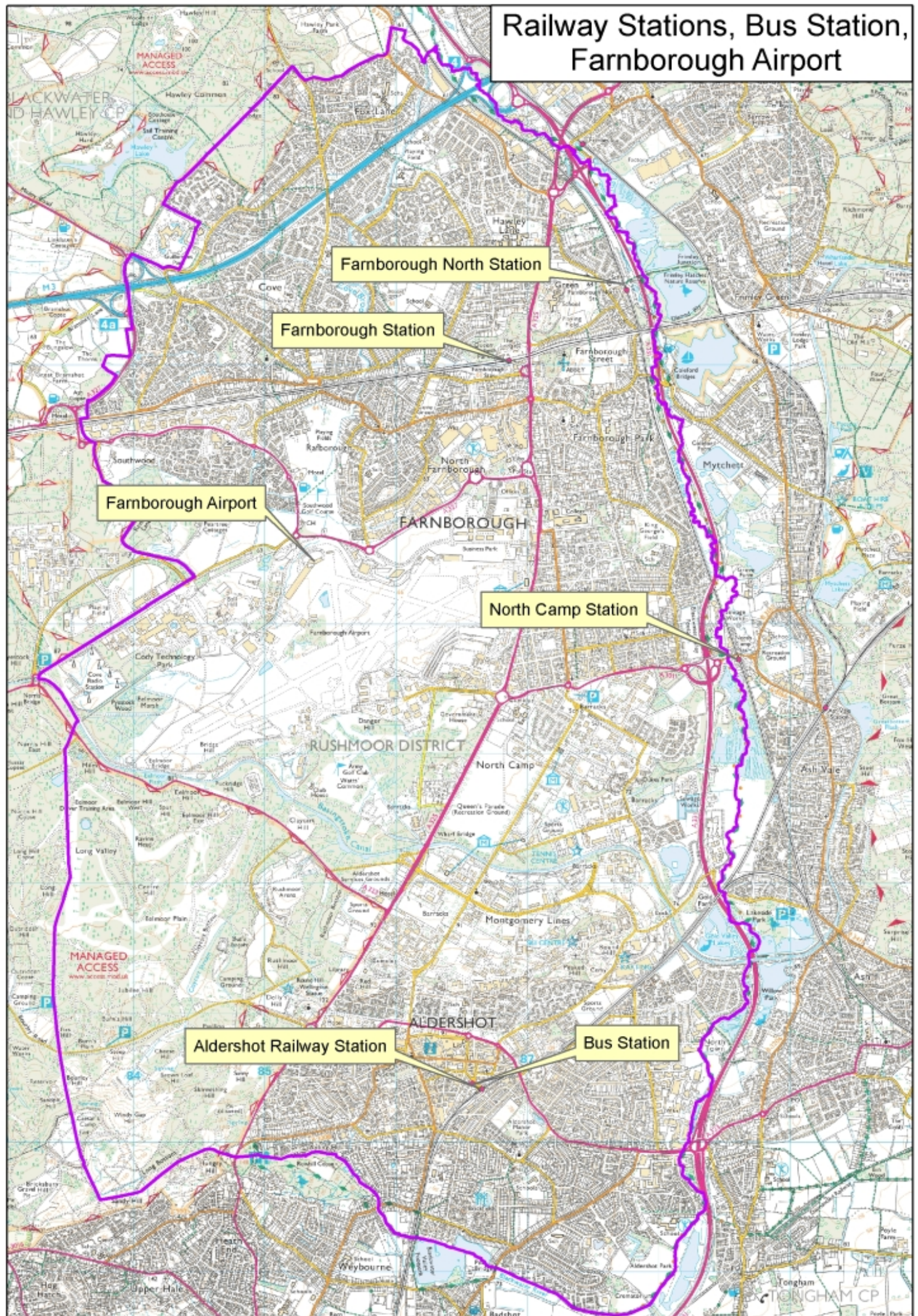
<b>Lead Organisation</b>	<b>Hampshire County Council</b>
Existing provision	Highway network includes footways and cycleways and cycle parking. Some firms have private pool bike schemes.
Known Planned Provision (and funding)	A number of pedestrian and cycling schemes are identified in the Hampshire Strategic Infrastructure Statement (February 2013). These include 'borough-wide' improvements, improved cycle links for the Wellesley development, an off-road Cove Brook cycle link and longer term strategic routing improvements identified in the Rushmoor Cycle Routes Review for Farnborough. The shortfall in funding at the time of publication was approx. £6.75m.
Key Issues for Rushmoor	Promotion of sustainable modes of transport and the provision of a successful network are integral to the delivery of a sustainable places.
Implications for the Rushmoor Plan	The projected increase in housing and development and encouragement of alternative modes of transport to the car and travel planning inevitably increases more use of the footway and cycleway network.  Links between new development and key locations, including Farnborough and Aldershot town centres, schools and medical facilities, are important as well as quality cycle parking at key locations.
Sources of Funding	The County Council will seek funding from development contributions to support the deficit.
Evidence	Hampshire County Council Strategic Infrastructure Statement (February 2013)







# Railway Stations, Bus Station, Farnborough Airport





## Utilities and Waste 9

## 9 Utilities and Waste

**9.1** The following tables set out the existing and future situation in the Borough in relation to the provision of water, sewage treatment, gas, electricity, telecommunications, and waste collection, disposal and recycling.

### Water supplies

Lead Organisation/Provider	South East Water
Existing provision	<p>South East Water is responsible for the drinking water supplies to the Rushmoor area. The supply of water for the area is drawn predominantly from groundwater sources although provision from Bray Water Treatment Works is via surface water abstraction. A local grid helps water companies meet demand across company and local administrative boundaries.</p> <p>South East Water has undertaken a detailed review of its supply forecast and demand forecast for the next 25 years from 2015 to 2040, and have drafted a Water Resource Management Plan (June 2014). South East Water identify that Rushmoor falls into Resource Zone 4. This is an identified area with a high vulnerability to climate change.</p>
Known Planned Provision (and timing)	<p>Metering 90% of customers by 2020. Adoption of all customers' supply pipes.</p> <p>South East Water has adopted a twin track approach - developing new sources of water and initiatives to reduce demand.</p> <p>South East water states that further resource development will be necessary in Resource Zone 4 . During the period 2015-20, SEW are seeking to develop a groundwater source at Boxall's Lane (Aldershot).</p> <p>£390m investment over five years to improve infrastructure throughout South East Water's operating area.</p> <p>£ 85,000 upgrades to water mains in Union Street, Wellington Street and High Street, Aldershot, due for completion early 2015.</p>
Funding for Known Planned Provision	<p>Over the 25 year planning period SEW estimate that the current cost of their plan will be £500m and will increase the supply of water by up to 156 MI/d.</p> <p>The cost attributed to the Boxall's Lane scheme is £2.7m.</p>

## 9 Utilities and Waste

Lead Organisation/Provider	South East Water
Key issues for Rushmoor	<p>Investigations have shown the impact of the following factors on water supplies - lower than average rainfall; climate change; environmental needs; increased demand; population growth; changes in lifestyle.</p> <p>We use around 160 litres a day compared to 150 litres in other parts of England and Wales. The Wellesley development (including 3,850 new homes) is expected to result in an additional required 6.7 mega litres per annum of potable water.</p> <p>In 2007 South East Water's supply area was declared an area of serious water stress. The age and condition of water mains have also been identified as an issue.</p>
Implications for the Rushmoor Plan	<p>Liaison with the water companies regarding the number and location of new homes to feed into future long term strategies.</p> <p>In the South East region we rely heavily on water from the ground - some seventy five percent of the water supplied by South East Water is abstracted from chalk and sandstone aquifers. It is likely that the need to protect and improve our environment will mean that we will have to abstract less water from the ground in future. This is largely as a result of reviews being carried out under European legislation, such as the Habitat Directive and the Water Framework Directive. An issue for the Local Plan is therefore to make the most efficient use of water resources and protect water quality, as well as incorporating flood mitigation and adaptation methods such as Sustainable Drainage Systems.</p>
Sources of funding	<p>The standard model is for water companies to fund investment via business plans regulated by Ofwat. At this stage in the water companies' planning process, and having regard to commercial confidentiality issues, it is not possible to identify costs nor consequently funding gaps.</p>
Evidence	<p>South East Water's Water Resource Management Plan 2014</p>

## Utilities and Waste 9

## Sewage Treatment

Lead Organisation/Provider	Thames Water
Existing provision	<p>Thames Water is largely responsible for sewerage infrastructure in Rushmoor with the Borough being served by 3 sewage treatment works (STWs) with Camberley STW being the largest, draining 50% of the borough geographically. The other works of note are Aldershot Town STW (28%) and Ash Vale STW (22%).</p> <p>Foulwater from the military town drains through existing sewerage sub systems towards the Basingstoke Canal. The main sewer passes beneath the canal to Camp Farm Sewage Treatment works which is owned by the MoD and operated by C2C and Aquatrine - see section 15. Outside the Military town, the remainder of development in Rushmoor is likely to drain to Aldershot or Camberley Sewage Treatment works.</p>
Known planned provision and funding	<p>Our strategy is to give priority to ensuring our works continue to meet whatever standards are set, through careful assessment of the risk of failure and focusing investment accordingly. This will include improved monitoring and realtime control of our treatment operations and an increased focus on pre-emptive maintenance work on equipment which, if it failed, could cause significant problems such as river pollution.</p>
Key Issues for <b>Rushmoor</b>	<p>The projected population growth in our area will increase demand for sewage services.</p> <p>There are limited opportunities to further improve existing sewage works, making it probable that larger scale , more strategic solutions will be required.</p> <p>Aldershot and Camberley STWs have limited capacity and it is likely that some level of development at these STWs will be necessary. Limited land is available at both sites for expansion opportunities, requiring relocation of one or more STWs.</p> <p>There are problems with combined sewers i.e. Surface and foul sewage leading to unauthorised connections.</p>
Implications for the Rushmoor Plan	<p>Investment programmes are based on development plan allocations and a 3 - 5 year lead in time is required in time for provision of extra capacity (more if a new water or sewage treatment works is required). Due to the way water companies are regulated Thames Water advise that it will not be possible to identify all of the water/sewerage infrastructure required over the plan period.</p>

## 9 Utilities and Waste

Lead Organisation/Provider	Thames Water
	Parts of the Borough suffer from surface water flooding. In conjunction with the Borough Council, Hampshire County Council have prepared a Surface Water Management Plan for the Borough which identifies areas of high risk.
Sources of funding	The water companies investment programmes are based on a 5 year cycle. The latest plan covers the period 2015-20. Funding is derived from customers.
Evidence	Five-year plan 2015-20 (AMP6)  Our long-term strategy 2015 - 2040

### Gas Supply

Lead Organisation/Provider	Various private sector energy suppliers
Existing provision	National Grid is responsible for transporting gas through the National Transmission System (NTS) - the high-pressure part of National Grid's transmission system (which transport gas from the import terminals to major centres of population and some large industrial users) on behalf of the shippers (gas suppliers). Twelve Local Distribution Zones (LDZs) contain pipes operating at lower pressure which eventually supply the consumer. The LDZs are managed within eight Gas Distribution Networks (GDN). The distribution network in Hampshire is owned and managed by Scotia Gas Networks, operating as Southern Gas Networks.
Known planned provision and funding	Gas service replacement of all gas mains in Aldershot.
Issues for Rushmoor	No additional requirements for gas supply have been identified.
Implications for the Rushmoor Plan	The long term development statement for Southern Gas Networks was published in October 2014. This provides a ten year forecast of transportation system usage and likely system developments. It contains information on actual and forecast volumes, the processes for planning and development of the system and planned major reinforcement projects and associated investment.
Sources of funding	Investment for the gas industry comes from the private sector. However, Ofgen specifies the maximum revenue that a gas distribution network can recover from its customers and seeks to establish a regulatory framework that provides incentives for GDNs to invest in gas infrastructure.

## Utilities and Waste 9

<b>Lead Organisation/Provider</b>	<b>Various private sector energy suppliers</b>
Evidence	Long term development statement 2014 for Scotland gas networks and Southern gas networks (October 2014)

**Electricity Supply**

<b>Lead Organisation/Provider</b>	<b>Various private sector energy suppliers</b>
Existing provision	National Grid owns and maintains the high voltage electricity transmission system in England, together with operating the system across Great Britain. Scottish and Southern Energy (SSE) is the local Distribution Network Operator (DNO) covering the whole of Hampshire. SSE are the owners and operators of the network of towers and cables that bring electricity from the high-voltage transmission network to homes and businesses. Southern Electric (part of Scottish and Southern Energy group) is the company which then supplies and sells electricity to domestic, commercial and smaller industrial premises.
Known planned provision and funding	Hampshire County Council suggest that the electricity supply for North Hampshire will be funded by private investment and developer contributions, although the total capital funding could not be identified.
Issues for Rushmoor	<p>No additional requirements for electricity supply have been identified other than provision at Wellesley - see section 15.</p> <p>There are some large IT users in the Borough, therefore a constant supply is essential.</p>
Implications for the Rushmoor Plan	<p>The long term development statement for Southern Electric Power Distribution plc's electricity distribution system was published in November 2014. The statement covers the period 2013/14 to 2017/18. The purpose of the statement is to :</p> <ul style="list-style-type: none"> <li>• Provide sufficient information which will assist existing and prospective new users who contemplate entering into distribution arrangements with the licensee to identify and evaluate opportunities; and</li> <li>• Inform users of distribution network development proposals.</li> </ul> <p>Aside from need generated by the Wellesley development, there are no known implications for the delivery of the Rushmoor Local Plan</p>
Sources of funding	Investment in the electricity industry comes from the private sector. However, Ofgen sets 'use of system' revenues for the electricity industry. RIIO-ED1 will be the first electricity distribution price review to reflect the new regulatory framework first adopted in RIIO-T1 and RIIO-GD1 (gas distribution). It will run from 2015 to 2023. In line with wider trends in electricity networks, it puts an emphasis on incentives

## 9 Utilities and Waste

<b>Lead Organisation/Provider</b>	<b>Various private sector energy suppliers</b>
	to secure the innovation required for a cost effective transition to low carbon technology.
Evidence	The long term development statement for Southern Electric Power Distribution plc's electricity distribution system (November 2014)

### Telecommunications and Broadband

<b>Lead Organisation/Provider</b>	<b>Mobile Operators Association Various Broadband Providers</b>
Existing provision	<p>The Borough was 'cabled' a number of years ago.</p> <p>Eighty one sites now built (may or may not be taking call traffic)</p> <p>Although there are no further masts planned, some existing sites are being replaced to enable consolidation of services.</p>
Known planned provision and funding	BT Broadband upgrade to fibre optic cables underway
Issues for Rushmoor	The broadband network now covers most households in the Borough although at varying speeds. There are local concerns regarding the visual and perceived health issues relating to telecommunications developments.
Implications for the Rushmoor Plan	Local Plan policies and guidance can provide a guiding framework to ensure the sensitive location of facilities where planning permission is required. However telecommunications companies are usually able to provide the necessary infrastructure by utilising their statutory powers.
Sources of funding	Mobile operators
Evidence	Mobile Operators Association annual roll out plans 2013 - 2014 HCC discussions

## Utilities and Waste 9

**Waste collection, disposal and recycling**

<b>Lead Organisation/Provider</b>	<b>Veolia Environmental Services in partnership with Rushmoor Borough Council. HCC as the waste disposal authority.</b>
Existing provision	<p>The integrated waste management strategy relies on handling waste in a four pronged approach: waste minimisation, recycling (including composting), energy recovery, and finally as a last resort, landfill.</p> <p>There are two Household Waste Recycling Centres (HWRC) in Rushmoor: Eelmoor Road, Farnborough and Ivy Road, Aldershot.</p> <p>There are twenty four mini recycling centres for additional (glass, textiles, books, shoes, cans, aluminium foil) throughout the borough.</p> <p>There are also 50 glass bring banks throughout the borough.</p>
Known planned provision and funding	Veolia Environmental Services have a contract extension until 2017 including refuse and recycling collections, street cleaning, highway verges and parks and grounds maintenance.
Issues for Rushmoor	<p>Every year Rushmoor residents dispose of approximately 28,000 tonnes of rubbish.</p> <p>Recycling performance currently stands at 26% which is slightly lower than previous years.</p> <p>Options to improve performance are being developed through the review of contracted services and service provision post 2017.</p>
Implications for the Rushmoor Plan	Minimise waste creation and disposal and provide opportunities for recycling in new developments.
Sources of funding	Funding of the collection and processing infrastructure needed to handle municipal wastes is the responsibility of the district and county councils as waste collection and disposal authorities. In the case of waste processing and disposal, operational activities are undertaken by a private sector contractor (Veolia) under a long-term contract with the waste disposal authority (HCC).
Evidence	Project Integra Action Plan 2011-2016 Rushmoor Borough Council



## 10 Education

### 10 Education

**10.1** The following tables set out the existing and future situation in the Borough in relation to Post 16 Education, to Secondary education and to primary education.

#### 16 - 19 Education

<b>Lead Organisation</b>	<b>Hampshire County Council/post 16 providers</b>
Existing provision	<p><b>Farnborough College of Technology</b> provides vocational and technical education and training across a broad spectrum of needs - from basic skills programmes and GCSEs to degree and MBA courses.</p> <p>As well as the main campus based in Farnborough, the Aldershot College which opened in September 2005 provides facilities for construction crafts students, and a drop in centre for IT. There are also professional, business and leisure courses at a number of school sites in the local vicinity.</p> <p><b>Farnborough Sixth Form College</b> offers nearly 60 A levels, a number of pre-A level courses in some vocational areas, and a very limited number of GCSEs.</p> <p>Extensive refurbishment and investment over the entire site since 2000 at a cost of over £25m.</p> <p>Total admission places for 1,500 students.</p> <p>No education authority Secondary Schools in Farnborough have a sixth form, although these are present at Farnborough Hill and Salesian private schools. .</p>
Known Planned provision	<p>Hampshire County Council has a statutory duty to ensure the sufficiency of provision for 16-19 learners following the abolition of the Learning and Skills Council (LSC) for Hampshire and the isle of Wight to Hampshire County Council.</p> <p>Plans for a new state of the art, sustainable building to replace the old sixth form college are being considered for the future.</p>
Key Issues for Rushmoor	Protection and support of existing further educational facilities to meet future demands.

## Education 10

<b>Lead Organisation</b>	<b>Hampshire County Council/post 16 providers</b>
Implications for the Rushmoor Plan	The Government is proposing a change to the age a child must be at school, in training, or in an apprenticeship from 16 to 17 in 2013 and to 18 in 2015, to increase equality and help prepare all young people to face the changing labour market.
Evidence	Hampshire County Council

## Secondary Education

<b>Lead Organisation/Provider</b>	<b>Hampshire County Council</b>
Existing provision	<p>There are currently four education authority secondary schools in Rushmoor serving a pupil population of over 3,242 at October 2013, with a total of 762 admission places available each September.</p> <p>HCC use a standard of 0.21 children per dwelling to assess the long term demand arising from new development.</p> <p>Secondary education is also provided at Farnborough Hill and Salesian private schools.</p> <p>A proportion of pupils also attend secondary schools in neighbouring authorities, particularly in Surrey.</p>
Known planned provision	<p>The Hampshire Strategic Infrastructure Statement (February 2013) identifies the following:</p> <p>Additional 750 secondary places associated with Wellesley development.</p> <p>Additional Rushmoor secondary places - 230 places provided for 2020. Pressure related to recently permitted new housing development in the Borough and pupil population growth.</p> <p>Additional Rushmoor secondary places - 210 places provided for 2027. Pressure related to planning new housing development in the Borough up to 2027.</p>

## 10 Education

Lead Organisation/Provider	Hampshire County Council
Funding for known planned provision	<p>At the time of publication of the Strategic Infrastructure Statement, the additional 750 places associated with Wellesley are funded by the developer (£20.7m)</p> <p>Funding had been secured (£7.4m) and no shortfall was indicated for the initial 230 places.</p> <p>A funding shortfall of £6.45m was identified in relation to the additional 210 places. Future developer funding is identified as the proposed funding source.</p>
Key Issues for Rushmoor	<p>It is likely that extensions to existing schools will be required to meet the additional pupil numbers from new housing in the areas, including the major development at Aldershot Urban Extension.</p> <p>Hampshire County Council projections show an overall surplus of secondary school places of 3% in 2018.</p>
Implications for the Rushmoor Plan	Appropriate policies to ensure adequate provision over the plan period including provision for pupils arising out of the AUE development.
Evidence	<p>Hampshire Strategic Infrastructure Statement (February 2013)</p> <p>Hampshire School Place Planning Framework 2013-2018 with 2013 pupil number data, Hampshire County Council.</p>

## Primary Education

Lead Organisation/Provider	Hampshire County Council
Existing provision	<p>There are ten Infant/Primary/Junior Schools in the Aldershot area with a pupil population of 2,798, the capacity at October 2013 was 2,972 giving a surplus of 5%.</p> <p>Reception year intake at October 2013 was 464 with 472 vacant places, this gives a 2% intake surplus.</p> <p>There are 21 Infant/Primary/Junior Schools in the Farnborough/Cove area with a pupil population of 4,733, the capacity at October 2013 was 4852 leaving a surplus of 2%.</p>

## Education 10

Lead Organisation/Provider	Hampshire County Council
	Reception year intake at October was 720 with 726 vacant places, giving a 1% intake surplus.
Known planned provision	Two additional primary schools as part of Wellesley (developer funded)
Funding/timing for known planned provision	See section 15.
Key Issues for Rushmoor	<p>The Hampshire Strategic Infrastructure Statement (Feb 2013) states that natural population growth and pressure from recent housing development and the associated rise in pupil population, means that additional school primary places in Aldershot and Farnborough are required over the next five years.</p> <p>However, Hampshire County Council projections show an overall surplus of primary school places (including infant and Junior schools) available in Rushmoor for 2018 as follows : Aldershot 11% Farnborough/Cove 11%.</p> <p>HCC have identified that forecasts show increasing pressure on places at Year R in the Aldershot area and it is likely that there will be a requirement for additional school places to be provided during the period covered by the Local Plan. The Council is working with HCC to identify the location of any shortfall and to identify specific schemes which would be required to ensure adequate provision and how these might be funded.</p>
Implications for the Rushmoor Plan	Appropriate policies to ensure adequate provision over the plan period including provision for pupils arising out of the Wellesley development.
Evidence	<p>Hampshire School Place Planning Framework 2013-2018 with 2013 pupil number data, Hampshire County Council.</p> <p>Aldershot Urban Extension Supplementary Planning Document 2009.</p> <p>Hampshire Strategic Infrastructure Statement Feb 2013</p>

**Other Schools:**

**10.2** There are also two **Special Schools** in the Borough. These are:

## 10 Education

***Samuel Cody, Farnborough:*** This accommodates children of 11 - 16 years with moderate learning difficulties. This school had 122 pupils on roll 2013. The school has now relocated to the site previously occupied by Oak Farm Community School.

***Henry Tyndale, Farnborough:*** This accommodates children of 2 - 19 years with learning difficulties with special needs. This school had 118 pupils on roll in 2011.

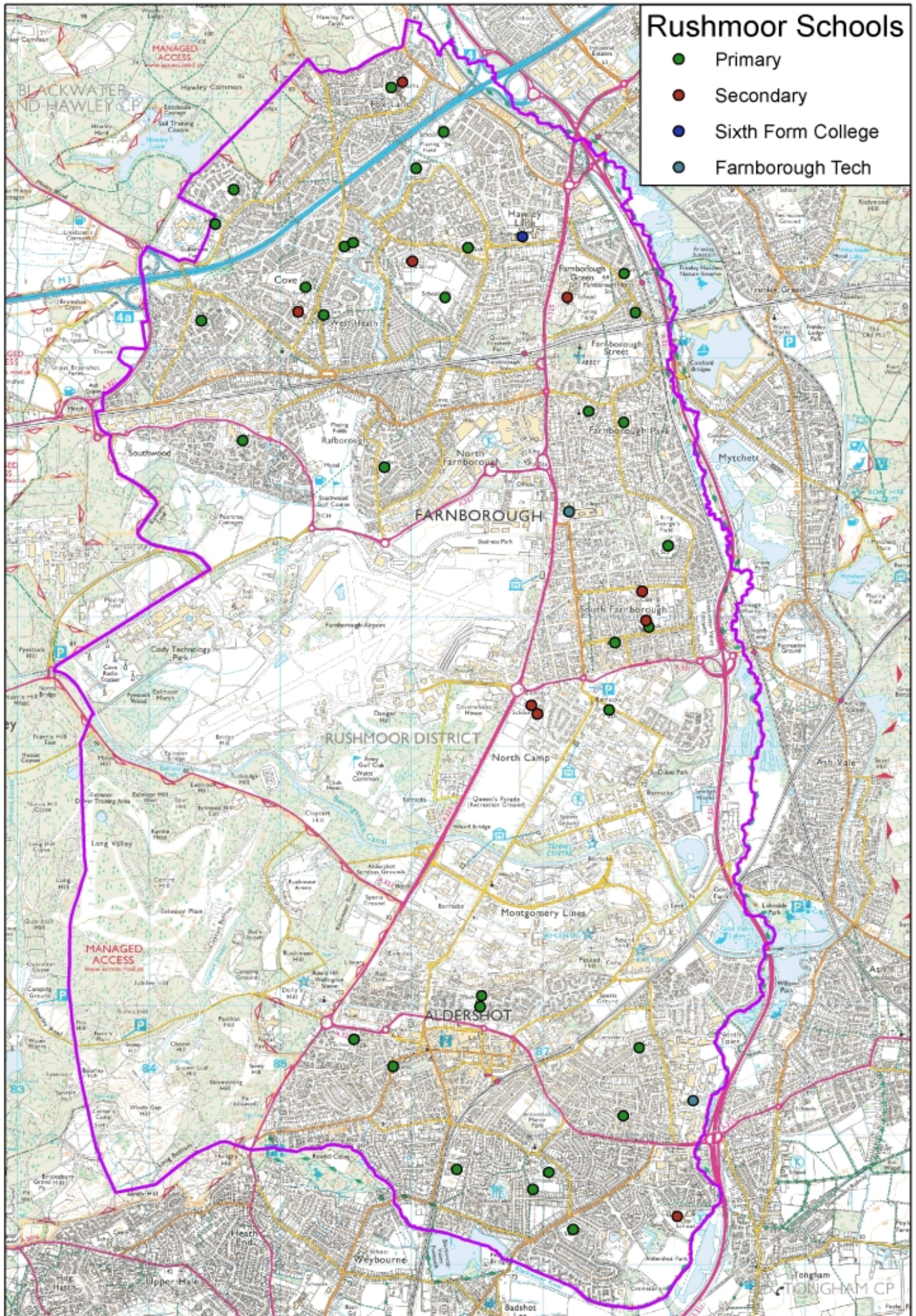
**10.3** Advice from Hampshire County Council will be used to assess the need for additional capacity.

**10.4** There are also a number of **pre-school facilities** in the Borough.

**10.5** Pre-school provision is very important but it is largely provided by the private sector in nurseries, by registered child-minders and informally by families and is not covered in this Plan.



- Primary
- Secondary
- Sixth Form College
- Farnborough Tech





## 11 Health Care

### 11 Health Care

**11.1** The following tables set out the existing and future situation in the Borough in relation to acute and local health care.

#### Acute Health Care

**11.2** The Borough does not contain a hospital. However it has close links with Frimley Park Hospital which lies within Surrey Heath Borough. It has a catchment population of around 400,000 and since 2005 has invested in a new modern eye unit, a new £2 million cardiac centre, expanded critical care facilities and extended consultant cover in front-line services. Facilities are also provided for residents at the Royal Surrey County Hospital in Guildford, and out-patient facilities in Fleet and Farnham.

**11.3** Future proposals for the future for Frimley Park Hospital include the redevelopment of A&E, the expansion of orthopaedic and day surgery facilities, the provision of satellite services to provide appropriate care nearer people's homes, to develop neonatal intensive care beds in the Special Care baby unit, to develop an emergency spinal service and to become a centre of excellence for heart, vascular and stroke services, including building a second cardiac catheterisation lab.

Lead Organisation/Provider	NHS England
Existing provision	Frimley Park Hospital (outside Borough)  Royal Surrey County Hospital (outside Borough)
Known planned provision and funding	No new strategic facilities are currently planned within the Borough.
Issues for Rushmoor	Levels of health are comparable with or better than the English average, however this masks pockets of health deprivation within the borough.  The urban nature of the Borough means that residents are better able to access a range of facilities by walking and public transport than Hampshire as a whole and most Hampshire Districts with the exception of access to hospitals.  By 2025 investment in Extra Care units is required due to the projected growth in the over 75 population.
Implications for the Rushmoor Plan	The provision of health facilities to meet the needs of all sections of the population is a crucial pre-requisite of all future development, wherever it may take place.
Evidence	2 Year Operating Plan 2014/15 to 2015/16

## Health Care 11

<b>Lead Organisation/Provider</b>	<b>NHS England</b>
	Hampshire Strategic Infrastructure Statement Version 1 (February 2013)

**Local Health Care**

**11.4** The North East Hampshire and Farnham Clinical Commissioning Group was established in 2013. A clinical commissioning group is an NHS organisation set up by the Health and Social Care Act 2012 to organise the delivery of NHS services in England. It is clinically led by GPs and clinical staff who work with patients and are best placed to make decisions about local healthcare commissioning.

**11.5** The CCG's responsibilities cover the commissioning of acute, community and mental health care for the local population. As well as working with providers, the CCG works closely with the bodies that have responsibility for commissioning other aspects of health and care services for local people:

- NHS England is responsible for commissioning primary care and the most specialised care (such as very complex hospital care and specialised mental health services)
- Hampshire County Council and Surrey County Council are responsible for commissioning public health and social care for the population.

<b>Lead Organisation</b>	<b>North East Hampshire and Farnham Clinical Commissioning Group</b>
Existing provision - see Plan below	<p><u>Aldershot Centre for Health</u></p> <p>Opened in 2008.</p> <p>Purpose built health centre for the population of Aldershot and the surrounding area.</p> <p>It combines Army and NHS primary medical services and replaced the old Aldershot Health Centre, the Cambridge Military Hospital and Aldershot Garrison medical facilities.</p> <p>It brings together GPs, dental services, clinicians, counsellors, community nurses, Army doctors, and a pharmacy.</p> <p>-</p> <p><u>GP services</u></p> <p>There are twelve GP's surgeries at various locations throughout Rushmoor.</p>

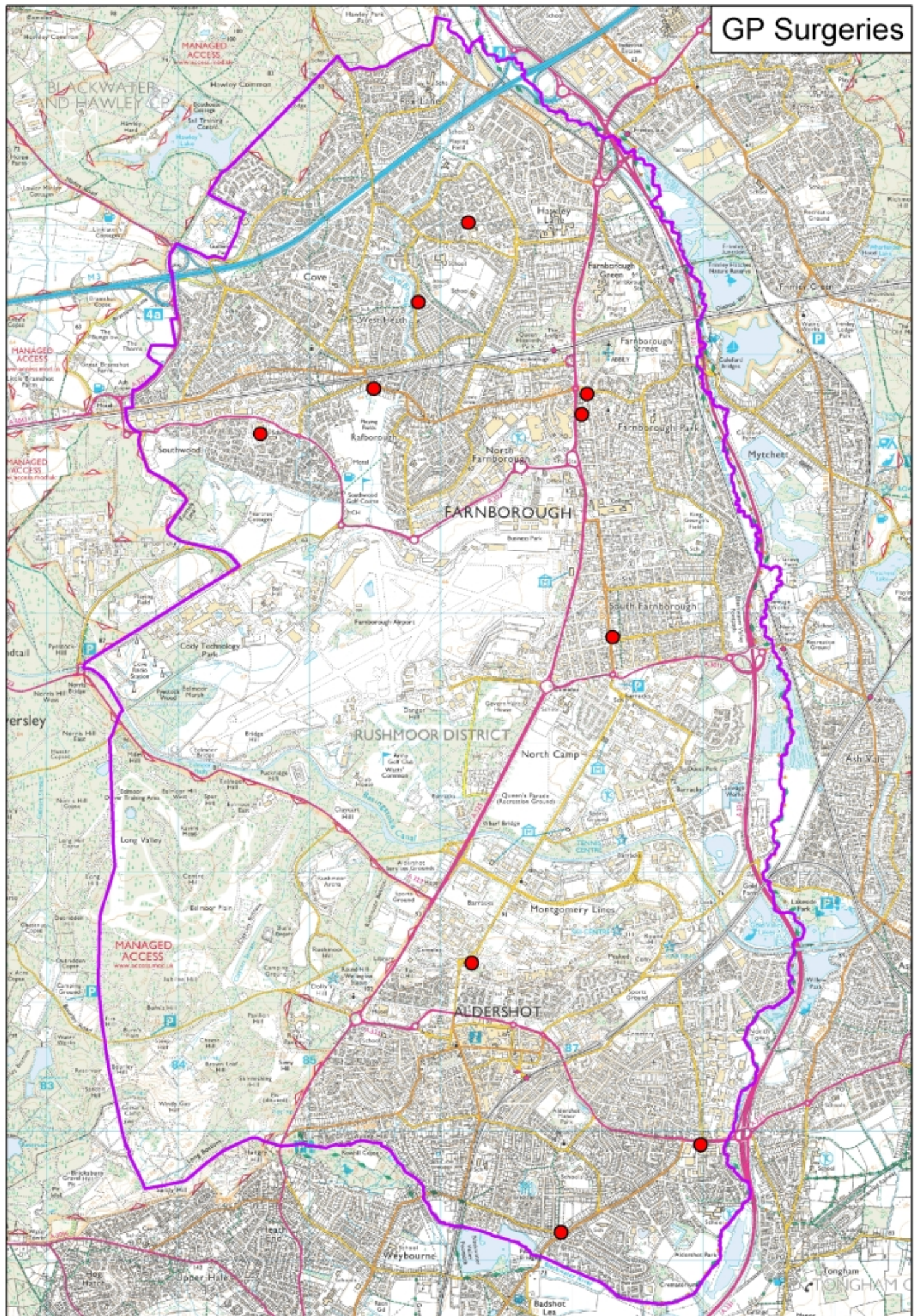


## 11 Health Care

<b>Lead Organisation</b>	<b>North East Hampshire and Farnham Clinical Commissioning Group</b>
	<p><u>Dentists</u></p> <p>There are ten Dentist practices at various locations throughout Rushmoor</p>
Known planned provision and funding	<p>Additional facilities within Aldershot Urban Extension.</p> <p>Demand for healthcare is rising at an unsustainable rate and the gap between available resources and projected funding requirements in our system will grow to £47m by 2018/19.</p> <p>The CCG Strategic Plan signals a significant shift towards investment in out of hospital care, with expenditure focused on primary and community care. This will help to reduce the burden on A&amp;E, outpatient, day case and inpatient activity within hospitals.</p>
Issues for Rushmoor	Some pockets of the Borough have low levels of health deprivation. In addition, levels of obesity in children are rising.
Implications for the Rushmoor Plan	To help to deliver appropriate health infrastructure along with other well being benefits such as opportunities for walking and cycling and access to open space and recreational facilities.
Evidence	Developing a sustainable health and care system in North East Hampshire and Farnham: Our strategic plan for the next five years April 2014



## GP Surgeries





## 12 Community Services/Facilities

### 12 Community Services/Facilities

**12.1** The following tables set out the existing and future situation in the Borough in relation to libraries, community and voluntary services, community services and facilities, places of worship and cemeteries.

#### Libraries

Lead Organisation/Provider	Hampshire County Council/Rushmoor Borough Council
Existing provision	<p>Libraries at Farnborough and Aldershot.</p> <p>A mobile library is available in certain areas of the borough.</p> <p>Specialist Army Libraries</p>
Known planned provision and funding	Farnborough Library is set to have a refurbishment in June/July 2015. Funding has been secured via developer contributions.
Key issues for Rushmoor	The Hampshire Strategic Infrastructure Statement (2013) identifies that Aldershot library only just meets the minimum space standard recommended by the Museums and Libraries and Archives Council (MLA) (minimum standard space of 30m <sup>2</sup> per 1000 population), whilst Farnborough Library falls slightly below. It is likely that to meet the proposed population growth capacity would need to be increased in both, ideally by 2017.
Implications for the Rushmoor Plan	<p>To ensure that a policy framework is in place that enables the delivery of increased capacity if needed.</p> <p>HCC are considering options for seeking developer contributions and the Council will work closely with them in investigating this.</p>
Evidence	<p>Hampshire County Council</p> <p>Hampshire Strategic Infrastructure Statement Version 1 (February 2013)</p>

#### Community and Voluntary Services

Lead Organisation/Provider	Various
Existing provision - see Plan below	<p><u>Rushmoor Voluntary Services</u></p> <p>Based in Farnborough, RVS is the council for voluntary services (CVS) for the borough of Rushmoor.</p>

## Community Services/Facilities 12

Lead Organisation/Provider	Various
	<p>During 2013/14 there has been an increase in the membership of RVS to 395 local organisations and charities.</p> <p>Infrastructure support to voluntary organisations is currently being reviewed by Hampshire County Council. The review could see delivery of certain services being transformed. The RVS strategic plan 2015-2018 will be reviewed following the outcome of the Hampshire County Council Review.</p>
Known planned provision and funding	RVS manage projects on Home Help, Dial a Ride ( a door to door transport service for those unable to access public transport contract with HCC), and Rushmoor and Hart Community Transport, Age Concern/Place Court Minibus, Rushmoor Volunteer Centre, Gardening project and the Community Access project.
Key issues for Rushmoor	Voluntary and community groups play an essential role in the social integration and well being of local communities.
Implications for the Rushmoor Plan	To ensure that development protects and provides the opportunities for a range of community and voluntary services.
Evidence	<p>Rushmoor Borough Council</p> <p>RVS Annual Review 2013/2014</p>

## Community Services/Facilities

Lead Organisation	Various including Rushmoor Borough Council
Existing provision - see Plan below	<p>Farnborough has three community centres and eight church halls.</p> <p>Aldershot has two community centres and eight church halls.</p>
Known planned provision and funding	New community space at Parsonage Farm Infant School.
Key issues for Rushmoor	Community centres provide the opportunity for enhancing a sense of place and community spirit providing a venue for a range of community activities.

## 12 Community Services/Facilities

Lead Organisation	Various including Rushmoor Borough Council
Implications for the Rushmoor Plan	To ensure that the community needs of new development are met.
Evidence	Rushmoor Borough Council

### Places of Worship

Lead Organisation/Provider	Various	
Existing provision - see Plan below	There are over twenty places of Christian worship in Rushmoor, other religions are not represented at present so followers would need to travel to other facilities outside of the borough.	
Known Planned Provision (and funding)	Places of worship are generally provided by private organisations.	
Key Issues for Rushmoor	Religious facilities in the community provide an important element of social cohesion and community spirit.	
Implications for the Rushmoor Plan	There may be requirements for additional facilities for places of worship to serve the future population, in particular reflecting a changing population make up. Opportunities for dual use of for example school and community facilities should be explored.	
Evidence	Rushmoor Borough Council	

### Cemeteries

Lead Organisation	Rushmoor Borough Council
Existing provision	There are three cemeteries and one crematorium in Rushmoor, plus church grounds. There is also a Military cemetery in Aldershot administered by the MOD.
Known planned provision and funding	The need for additional facilities in Aldershot is identified in the Aldershot Supplementary Planning Document.
Key issues for Rushmoor	There is only a limited supply of cemetery places left within Aldershot over the plan period.
Implications for the Rushmoor Plan	The Rushmoor Plan will need to make provision for additional needs arising from developments as well as exploring opportunities to allocate land to meet shortfalls.

## Community Services/Facilities 12

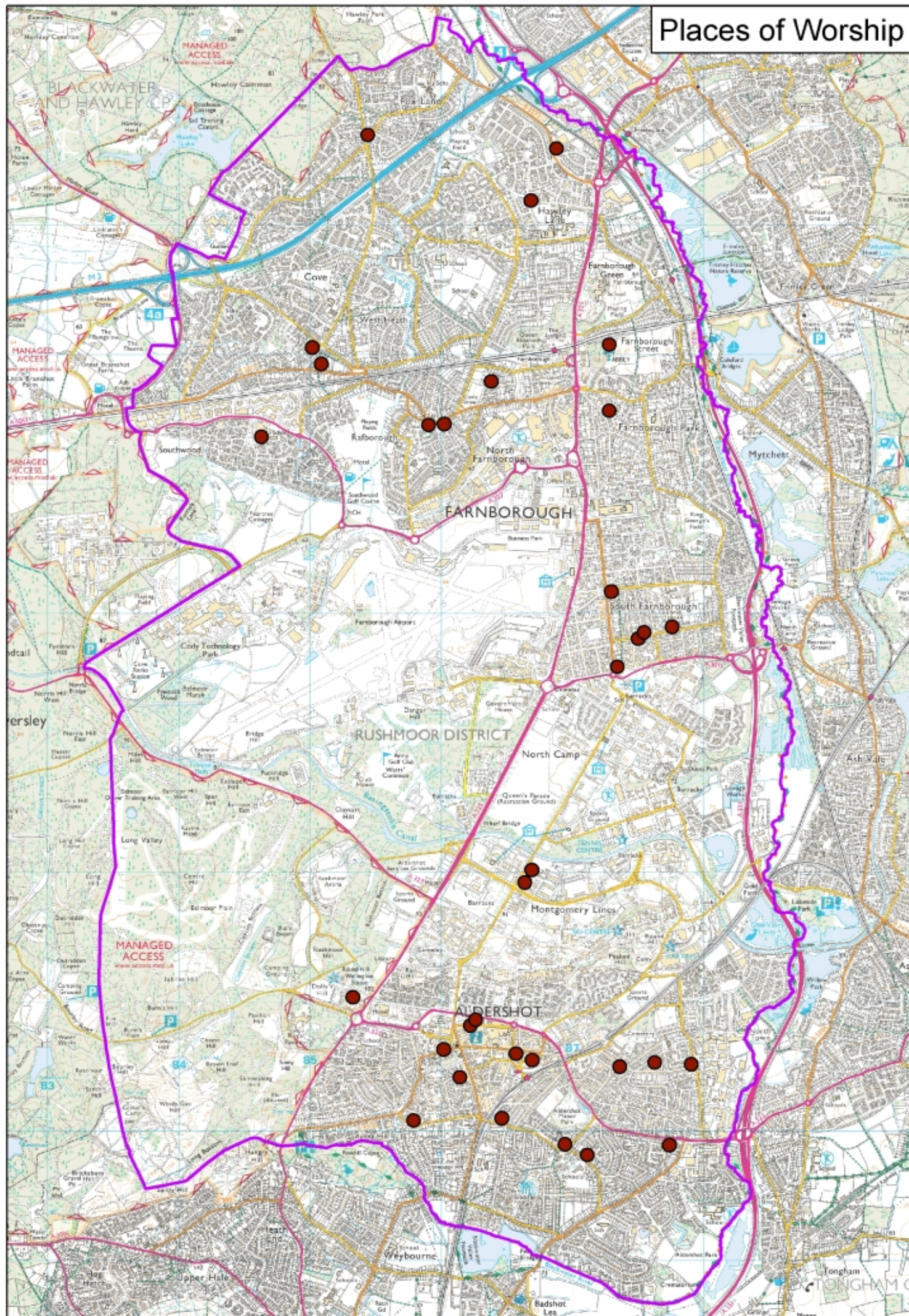
<b>Lead Organisation</b>	<b>Rushmoor Borough Council</b>
Evidence	Rushmoor Borough Council

**Sport facilities**

<b>Lead Organisation/provider</b>	<b>Rushmoor Borough Council/other providers</b>
Existing provision	<p>The Borough has a good range of indoor and outdoor sports and recreation facilities. These facilities include Farnborough Leisure Centre with Farnborough Bowl, Aldershot indoor pool, Alpine Snowsports, Southwood Golf Course, Connaught Leisure Centre (Aldershot), Fernhill Sports Centre, Wavell-Cody Community Campus and Oak Farm Community Campus (Farnborough).</p> <p>Aldershot Lido will be open for the 2015 season as is - and then a review will take place looking at how best to use the facility in the future.</p> <p>There are also facilities for a variety of voluntary run sports clubs including rugby, football, cricket bowls and the Rushmoor Gymnastics Academy.</p> <p>The sports facilities in the Military Town include the Garrison Sports Centre with a 50m pool, athletics track, rugby stadium, tennis centre, hockey centre and martial arts and boxing centre. They are all available at certain times for community use.</p> <p>The commercial sector provides a wide range of health and fitness suites, clubs, play facilities and bowling.</p>
Known planned provision and funding	New floodlit artificial grass pitches likely at Cove Football Club, Aldershot Park, Connaught School.
Key Issues for Rushmoor	The main priority for the future is to protect existing facilities and to improve and maintain the quality of existing provision.
Implications for the Rushmoor Plan	To ensure a policy framework is in place to protect against the loss of existing sports facilities.
Evidence	Rushmoor Borough Council

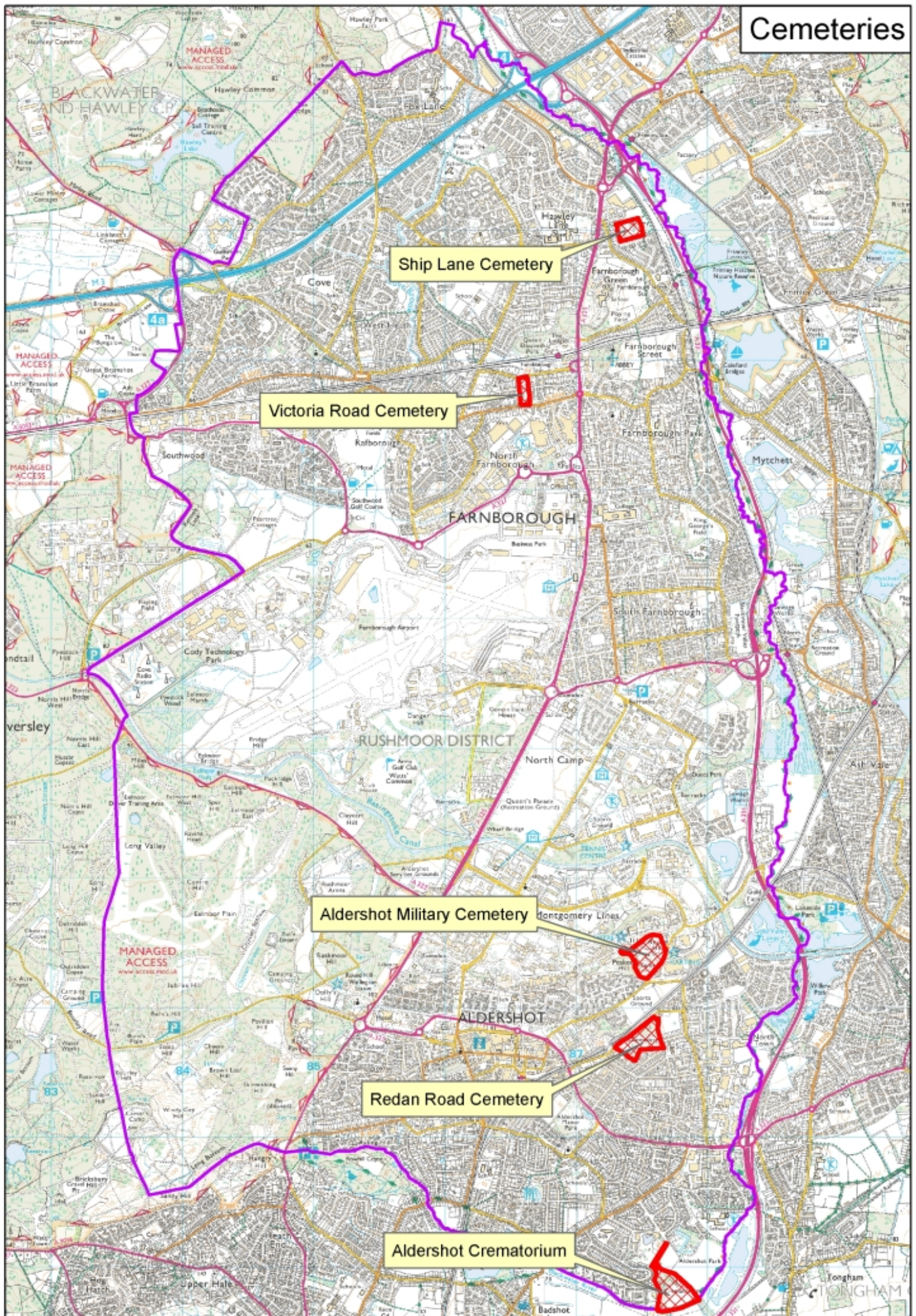


## Places of Worship





# Cemeteries





## 13 Emergency Services

### 13 Emergency Services

**13.1** The following tables set out the existing and future situation in relation to the provision of fire and rescue services, ambulance services, police services and flooding and flood defences.

#### Fire & Rescue

Lead Organisation/Provider	Hampshire Fire and Rescue Service
Existing provision	<p><u>Rushmoor Fire Station</u></p> <p>There are four wholetime watches and one retained crew operating three fire appliances, one multi role vehicle, and one landrover.</p> <p>Farnborough airport has its own service.</p>
Known planned provision and funding	None known
Issues for Rushmoor	<p>All fire and rescue services have a responsibility to identify the risks in their local communities and ensure they allocate resources to lowering those risks.</p> <p>New developments are unlikely to require new facilities. but rather changes to existing facilities.</p> <p>The Borough has additional risks from heathland fires on ecologically important areas.</p>
Implications for the Rushmoor Plan	The need to keep access from the public highway for emergency vehicles will be an important consideration.
Sources of funding	The Fire and Rescue service is funded through a combination of Council Tax, Support Grants and Business Rates. As with other public services long term investment/funding is difficult to predict. Therefore it is also not possible to identify whether there will be any future shortfalls in funding.
Evidence	Making Hampshire Safer - Hampshire Fire and Rescue Service Integrated Risk Management Plan

#### Ambulance

Lead Organisation/Provider	South East Coast Ambulance Service NHS Trust
Existing provision - see Plan below	Rushmoor Ambulance Station

## Emergency Services 13

<b>Lead Organisation/Provider</b>	<b>South East Coast Ambulance Service NHS Trust</b>
Known planned provision and funding	None known
Issues for Rushmoor	Demand for the ambulance service is driven by a number of factors; growth in population, changes in the type of patients accessing the service and the transformation of local NHS services. However, increased demand is predominately driven by an increase in patients with primary care needs accessing healthcare via the 999 service.
Implications for the Rushmoor Plan	Recognition of the ageing population and the need to keep access from the public highway for emergency vehicles will be important considerations.
Sources of funding	<p>From 1st April 2009 ambulance trusts have been eligible to apply for Foundation Trust status.</p> <p>Trusts now have to fund any capital expenditure from internally generated funds. Beyond internally generated funds, trusts may borrow against their Prudential Borrowing Limit (PBL)</p>
Evidence	South East Coast Ambulance Service

**Police**

<b>Lead Organisation/Provider</b>	<b>Hampshire Constabulary</b>
Existing provision	<p>Farnborough Police Station is now closed with Policing operations conducted via Aldershot Police Station &amp; the Council Offices.</p> <p>Proposals to close Aldershot Police Station and to locate officers at the Council Offices and/or buildings vacated by the MOD are under review by the Police Commissioner's office.</p> <p>The Farnborough area is divided into eight neighbourhood policing areas and a CID section.</p> <p><u>Aldershot Police Station</u></p> <p>The Aldershot area is divided into five neighbourhood policing areas and a CID section.</p>

## 13 Emergency Services

Lead Organisation/Provider	Hampshire Constabulary
	There is also a Military police presence in the military town.
Known planned provision and funding	As outlined above
Issues for Rushmoor	
Implications for the Rushmoor Plan	The increase in residential dwellings will place increased demands on Police resources. The joint use of facilities such as space in community and educational premises should be explored. There are no plans for any increases in infrastructure identified at present.
Sources of funding	The Hampshire Police Authority is funded by Government grants, inclusive of business rates, plus other income, such as service income and earned income on surplus cash and Council Tax. As with other public services long term investment/funding is difficult to predict. Therefore it is not possible to identify whether there will be any future shortfalls in funding though future facilities are thought likely in the future.
Evidence	Hampshire Constabulary

### Flooding and flood defences

Lead Organisation/Provider	The Environment Agency
Existing provision	<p>The scheduled main rivers and tributaries are the responsibility of the Environment agency.</p> <p>There are thirty five kilometres of ordinary watercourses for which Rushmoor Borough Council is the relevant operating authority, but not necessarily the owner.</p> <p>The main means by which flood risks will be managed is through the Environment Agency's flood dissemination plan.</p> <p>The council will ensure that regular maintenance is carried out on the flood defences and channels that are owned by the council and those that they are responsible for.</p> <p>The Environment Agency flood warning system covers all areas at risk from the Blackwater river.</p>



## Emergency Services 13

Lead Organisation/Provider	The Environment Agency
	The Basingstoke Canal Authority has set up emergency procedures to reduce the potential impact due to overtopping or breaches of the canal.
Known planned provision and funding	
Key issues for Rushmoor	<p>There are two kilometres of 'critical ordinary watercourses' that have the potential to cause serious flooding.</p> <p>Due to areas vulnerable to surface water flooding, Hampshire County Council has been given a grant from The Department for Environment, Food and Rural Affairs to prepare a Surface Water Management Plan for Farnborough.</p>
Implications for the Rushmoor Plan	Development should be located away from areas at risk of flooding. New development should incorporate flood mitigation or adaptation methods where appropriate. Appropriate infrastructure should be provided alongside new development.
Evidence	The Environment Agency, Rushmoor Borough Council.

## 14 Cultural/Historical Assets

### 14 Cultural/Historical Assets

**14.1** The following tables set out the current and future situation in relation to the provision of museums, theatres, and cinema's.

#### Museums, Theatres, Cinema

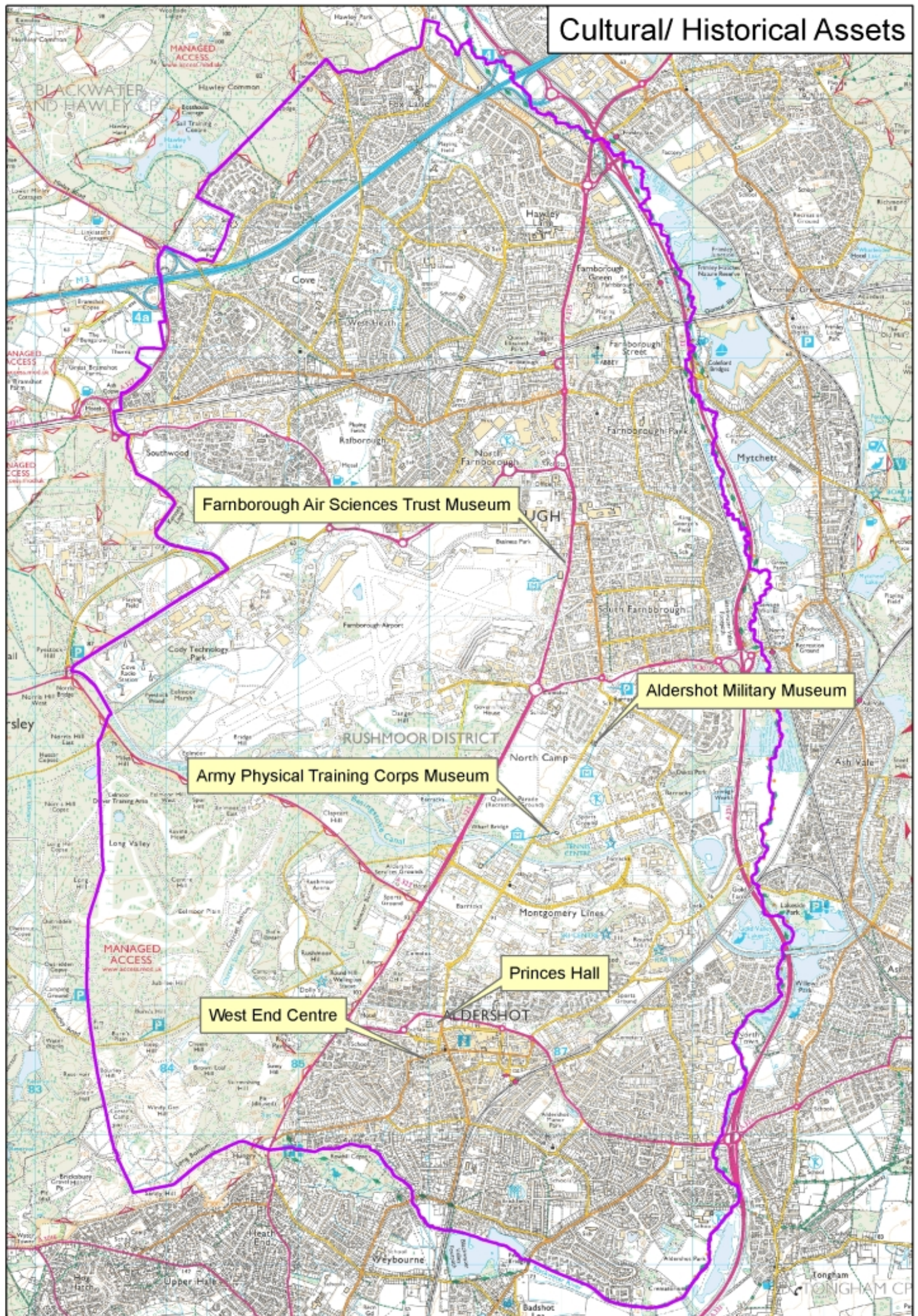
Lead Organisation/Provider	Rushmoor Borough Council
Existing provision	<p><u>Museums</u></p> <p><b>Aldershot Military Museum</b> records the Victorian origins of the military presence in this part of Hampshire, and the development of the Garrison since 1860s. The museum covers all aspects of local history and plays an active part in the community with regular events and theme days.</p> <p><b>Regimental museums such as the Army Physical Training Corps Museum</b> includes pictorial records, militaria and gymnastic equipment from the very first training course to the present day.</p> <p><b>Farnborough Air Sciences Trust Museum (FAST):</b></p> <p>FAST is concerned with the heritage of over 100 years of aerospace research undertaken around the Farnborough Aerodrome. Trenchard House houses part of the museums collection including: Models, photographs, documents, artifacts and memorabilia. Outside the building there are aircraft on display which had significant design and development contributions from the Farnborough site.</p> <p>All the material of special historical interest has been catalogued and removed from the listed buildings on the airfield site, but many items of general interest remain, some too large to move and store.</p> <p>FAST is working with the site owners on how to protect this part of the collection in situ while restoration of the listed buildings is carried out.</p> <p>In two storage sites near Farnborough, FAST is looking after a large collection of wind tunnels models and other artifacts, many cabinets of documentation and historical records of engineering and technical development and a large collection of plans and drawings relating to the Farnborough and Pyestock sites.</p> <p>FAST has now obtained in November 2013, official Arts Council Museums Accreditation in conjunction with the Science Museum (the trusts Curatorial Advisor) and Hampshire County Council.</p>

## Cultural/Historical Assets 14

Lead Organisation/Provider	Rushmoor Borough Council
	<p><u>Theatres</u></p> <p><b>Princes Hall</b> is a multi purpose centre in Aldershot managed by Rushmoor Borough Council. The main auditorium can currently seat 595 in a terraced seating layout or over 800 for a standing concert.</p> <p>An additional three function rooms are available for hire for conference parties and weddings.</p> <p><b>West End Centre</b> is a thriving arts centre in Aldershot, offering a diverse range of creative activities, including music and theatre, comedy, exhibitions, arts and crafts, workshops and community events.</p> <p><u>Cinemas</u></p> <p>New cinemas are located in Farnborough (Kingsmead) and Aldershot (Westgate)</p>
Known planned provision and funding	
Issues for Rushmoor	<p>Access to cultural and entertainment venues provides a sense of place and community. It also ensures that the Borough is an attractive place to live offering a range of cultural and leisure activities for residents. The inclusion of cinema's in the redevelopment for both town centres is a key element in their regeneration and in enabling residents to use those centres rather than travelling elsewhere.</p>
Implications for the Rushmoor Plan	The Local Plan will need to ensure that it promotes a mix of uses within Aldershot and Farnborough town centres.
Sources of funding	Both proposals will be funded by the cinema operating company.
Evidence	Rushmoor Borough Council



# Cultural/ Historical Assets





## 15 Wellesley

### Wellesley

**15.1** Wellesley, in the southern part of the Military Town, is one of the largest brownfield regeneration sites in the South East of England.

**15.2** The development will deliver a sustainable new community in a high quality landscape setting, providing much needed new homes and contributing to the regeneration of Aldershot Town Centre.

**15.3** In July 2013, the Council granted a hybrid planning permission for the Wellesley development. A Section 106 obligation relating to the provision of appropriate infrastructure was finalised soon after. The following table summarises the infrastructure, as outlined in the obligation, that is set to be provided at Wellesley over the plan period.

**15.4** At present it is anticipated that the first completions of new dwellings at Wellesley will be in 2015/16.

#### Infrastructure identified in the Section 106 obligation

Infrastructure Provision	Details	Funding/provision	Timing
<b>Education</b>			
Primary School places	<p>Eastern Primary School (2FE)</p> <p>Western Primary School (3FE)</p>	<p>Phased contributions from developer in accordance with the s106 obligation. Land transferred to Hampshire County Council.</p>	<p>Western primary school – transfer of land to HCC on occupation of 75th unit. HCC to build out for use in the academic year commencing in September closest to the 18th month anniversary of the transfer.</p> <p>Eastern primary school – transfer of land to HCC on occupation of 1,700th dwelling. HCC to build out for use in the academic year commencing in September closest to the 18th month anniversary of the transfer.</p>
Secondary school places	To be accommodated within existing secondary schools	Developers contributions of £11.75m towards necessary expansion.	Phased payments prior to occupation of dwellings over plan period



## 15 Wellesley

	(The Wavell School and the Connaught School)		
Day Care & Pre-school facilities	2 facilities within:  Zone L Neighbourhood Centre;  Zone O Mandora	Developer to provide building and maintenance for 10 years	Prior to 1,000 dwellings  Prior to occupation of Zone O Mandora
<b>Community Centre Facilities</b>			
Community Centre	Permanent facilities at ground floor level of Smith Dorrien building	Developer to provide.	Temporary facilities prior to 114 dwellings within Maida phase.  Permanent facilities at Smith Dorrien prior to 1,500 dwellings
<b>Healthcare</b>			
Doctors and dentist surgeries	Existing provision at Aldershot Centre for Health	N/A	N/A
Small gym/fitness centre	Existing provision at Maida Gym	N/A	N/A
Extra Care Facility	Facility comprising 100 one or two bedroom units of accommodation	Agree details of precise location and size of land. Land to be made available to the County Council for 5 years following agreement	Prior to occupation of 1,000 dwellings
<b>Cemetery</b>	2.0 – 4.0 hectares site to be provided.	Developer provided.	To be laid out before the occupation of the 1000 <sup>th</sup> dwelling.
<b>Library</b>	Existing provision in Aldershot town centre	No contributions	N/A
<b>Waste</b>			

## Wellesley 15

Household waste centre	To be provided at Zone R ABRO	Transfer freehold to HCC.  Developer contribution to include freehold provision of the land to Hampshire County Council and a financial contribution towards the design and construction costs.	Transfer of land prior to occupation of 675 dwellings or 6 months after notice served.
<b>Utilities</b>			
Water, foul water, gas and electricity	Electricity and gas supplies capable of adoption by a statutory undertaker.  A potable water supply capable of adoption by a statutory undertaker.  A foul water supply capable of adoption by a statutory undertaker.	All capital works costs associated with delivering water supply to Wellesley must be borne by the developer.	To be determined.
<b>Open Space</b>			
Suitable Alternative Natural Greenspace	Minimum of 92 hectares to be provided	Developer funded	Prior to occupation of 1st dwelling.
Sport and playing pitches	14.49ha to the west of Farnborough Road	Developer to fund the provision of pitches, then transfer freehold to RBC in addition to £795k contribution.	On the earlier of occupation of 200 dwellings in Zone B Coruna, any unit in Zone G Pennefathers, or 500 dwellings overall
Equipped play space and youth facilities.	2 x play areas  0.5ha at Parade Park opposite 4th Div HQ  0.5ha within God's Acre Zone	Developer to fund, and also to fund the long term maintenance of equipped play facilities.	Parade Park: To be commenced before the occupation of 750th dwelling and completed before commencement of 1500th dwelling or any dwelling in Zone K Stanhope Lines East.

## 15 Wellesley

			God's Acre: To be completed prior to occupation of 2000th dwelling or the opening of the Eastern Primary School whichever is the earlier
Provide informal open area	Informal amenity areas	Developer to provide and fund future maintenance as part of each phase.	To coincide with the delivery of each phase of development
Woodland	As identified on the Woodland Plan.	Condition and maintenance plan for the woodland area required within any development zone within which woodland lies	Prior to the commencement of any development within that zone.
Allotments	5 x 16 plots	To be provided on a phased basis by the developer.	First phase to be delivered prior to completion of 750 dwellings and subsequent phases at each 750 dwelling interval.

## Transport infrastructure requirements at Wellesley

Highways Works Description	Timing
Zone A Site Access	Prior to occupation of Zone A Maida
New access from A325 to Pennefather's Road controlled crossing of A325 and A325 improvements	Prior to the earlier of 200 units in Zone B Coruna, or any occupation in Zone G Pennefather's
A331 on slip and Government Rd/Ordnance Rd corridor improvements	Prior to occupation of 1,325 dwellings but reasonable endeavours shall be used to deliver the scheme earlier
Alison's Road improvements between A325 and Queens Avenue	Prior to occupation of any units in Zone I School End or Zone J Browning
Alison's Road improvements between A325 and Queens Avenue and Alison's Road Roundabout	Prior to occupation of any units in Zone L Neighbourhood Centre or Zone M Buller
Alison's Road improvements between Alison's Road roundabout and Clayton Barracks	Prior to occupation of any units in Zone N God's Acre or Zone Q Clayton
Queens Avenue improvements from Hospital Hill to Alison's Road including improvement of the Alison's Road/Queens Avenue junction	Prior to occupation of 60% of units in Zone B Coruna, or any units in Zone I School End, Zone H Stanhope Lines West or K Stanhope Lines East
Improvements to A323/A331 junction	Prior to occupation of 1325 units

## Wellesley 15

Improvements to St Alban's roundabout	Prior to occupation of 250 dwellings
---------------------------------------	--------------------------------------

Accessibility Works Description	Trigger
Foot/cycle improvements at Gun Hill including crossing improvements to the A323	Prior to occupation of Zone C CMH, Zone D McGrigor, or Zone K Stanhope Lines East
Hospital Hill South improvements including improvements to the A323 Wellington Avenue/Hospital Hill/Princes Way junction	Prior to occupation of 150 units in Zone B Coruna, or occupation of any units in either Zone G Pennefather's or Zone F Knollys
Footway/cycleway improvement scheme along A323 High St/Ash Rd towards Connaught School	Prior to occupation of 250 dwellings
Foot/cycle improvements north towards Queen's roundabout	Prior to occupation of Zone B Coruna or occupation of any units on Zone H Stanhope Lines West, Zone I School End, or Zone J Browning
Pedestrian Crossings to SANGS	Prior to occupation of Zone B Coruna
North Lane footway/cycleway works	Prior to occupation of any units in Zone N Gods Acre, Zone O Mandora, Zone Q Clayton, Zone R ABRO, or Zone S REME
North Lane / A323 Ash Road footway/cycleway works	Prior to occupation of any units in Zone N Gods Acre, Zone O Mandora, Zone Q Clayton, Zone R ABRO, or Zone S REME
Foot/cycleway improvements to Middle Hill including crossings on A323	Prior to occupation of 50% of units in Zone A Maida or occupation of any units within Zone E Gunhill

## 16 Green Infrastructure

### 16 Green Infrastructure

**16.1** The Borough contains a range of green infrastructure assets including waterways (such as the Basingstoke Canal and the Blackwater River), parks, playgrounds and play areas, the Covebrook Greenway, allotments and outdoor sports facilities. Outside the urban area, areas of countryside provide opportunities for recreational activities.

Green Infrastructure	Issues	Comment
<b>Open Space</b>	<p>The Open Space, Sport and Recreation Study prepared as evidence to the Local Plan examines the provision of different types of open space within Rushmoor.</p> <p>The evidence show significant variations in the provision of different types of open space across the Borough with a shortage of some types of space in some parts of the Borough.</p>	The protection of existing open space is considered through the Local Plan policies.
<b>Allotments</b>	<p>The Open Space, Sport and Recreation Study identifies deficiencies in allotment provision. The Council has 10 allotment sites, 8 in Farnborough and 2 in Aldershot providing 360 plots. There is an Aldershot Allotment Association providing a further 158 plots.</p> <p>There are over 300 residents on the waiting list but only about 20 plots become vacant each year.</p>	
<b>Suitable Alternative Natural Greenspace</b>	The provision of Suitable Alternative Natural Greenspace (SANG) is required to provide mitigation for the impact of new development on the Thames Basin Heaths Special Protection Area. SANG must meet size and layout criteria set by Natural England.	<p>The Council has identified and implemented three SANG sites. One at Southwood Woodland, the second at Hawley Meadows/Blackwater Park (shared jointly with Hart and Surrey Heath) and the third at Rowhill.</p> <p>A number of other sites are being pursued as SANG including Tongham Pools within Guildford Borough but adjacent to the</p>



## Green Infrastructure 16

Green Infrastructure	Issues	Comment
		<p>Rushmoor Borough boundary and Ball Hill (currently in the land ownership of Cody Technology Park). A LEP bid has been submitted to fund the purchase of the freehold of Ball Hill at the time of writing.</p>