



a community  
of three woods...

**Elvetham Chase I** 05 April 2016

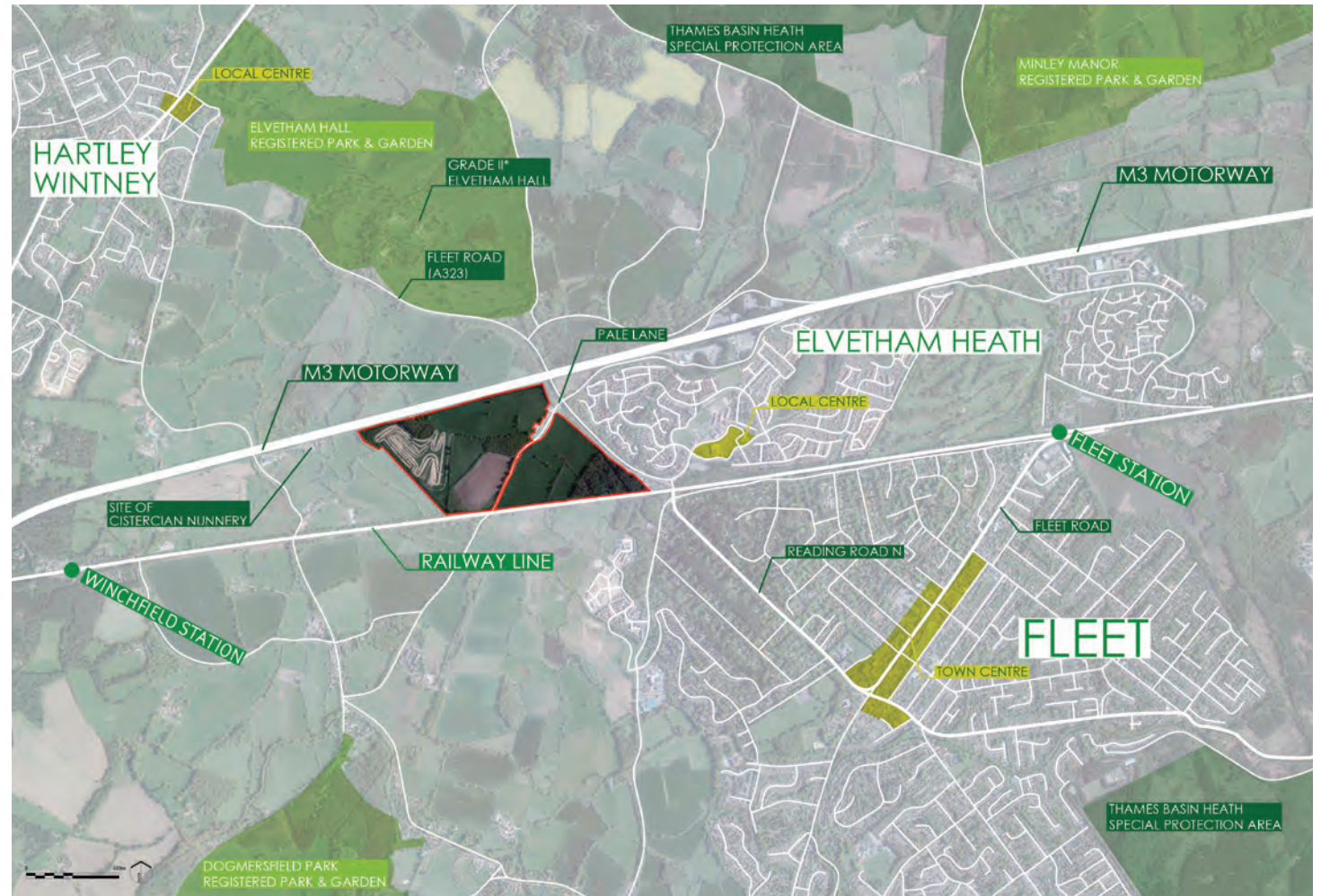
# Where we are...

- The Vision
- Design Crystallisation
- Moving Forward

# The Vision

## Local context

- Connected
- Ecology-Rich
- Heritage



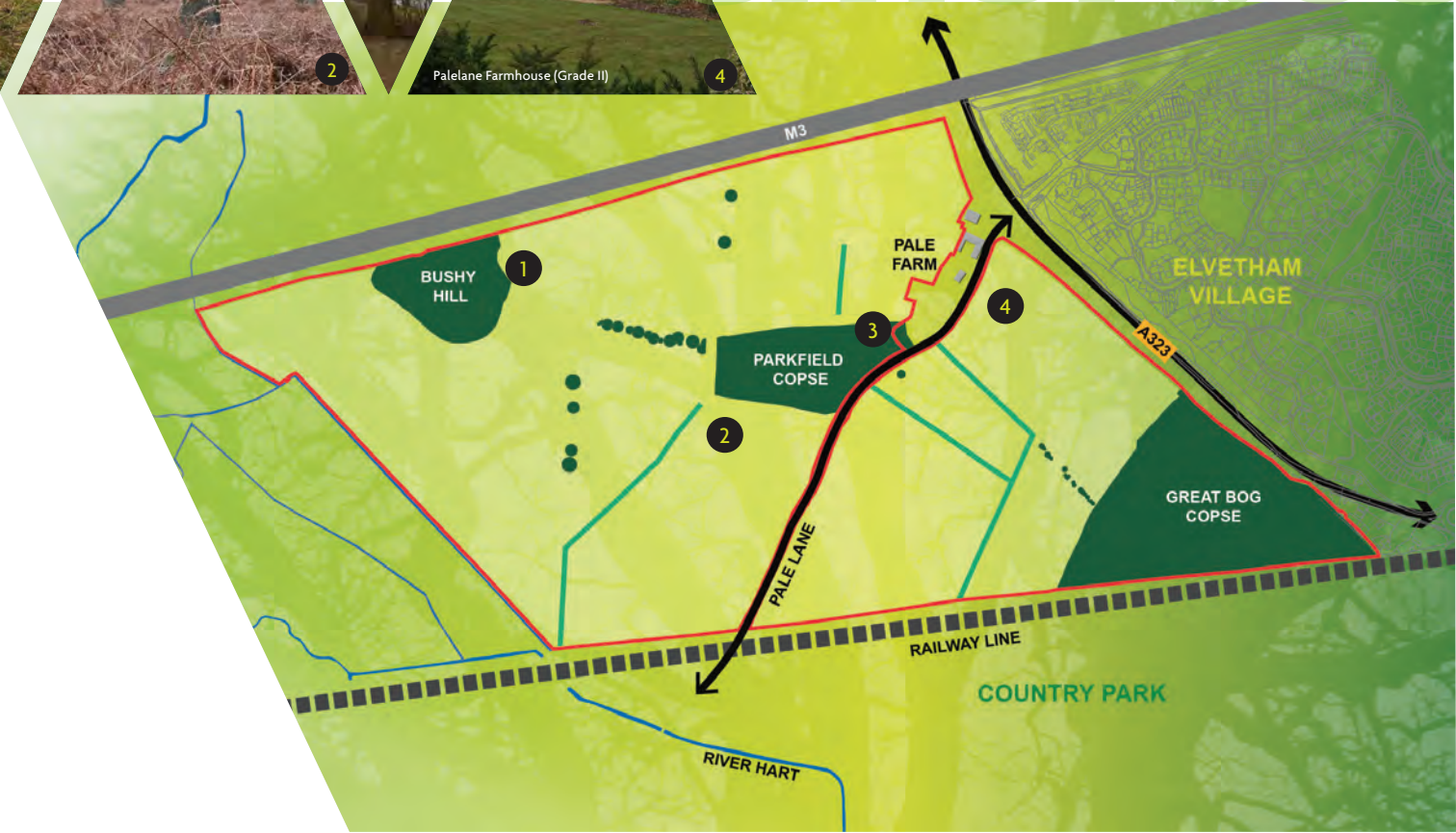
Contains OS Open data © Crown copyright and database right 2016 - Aerial Photography © Esri

embrace

# The Vision

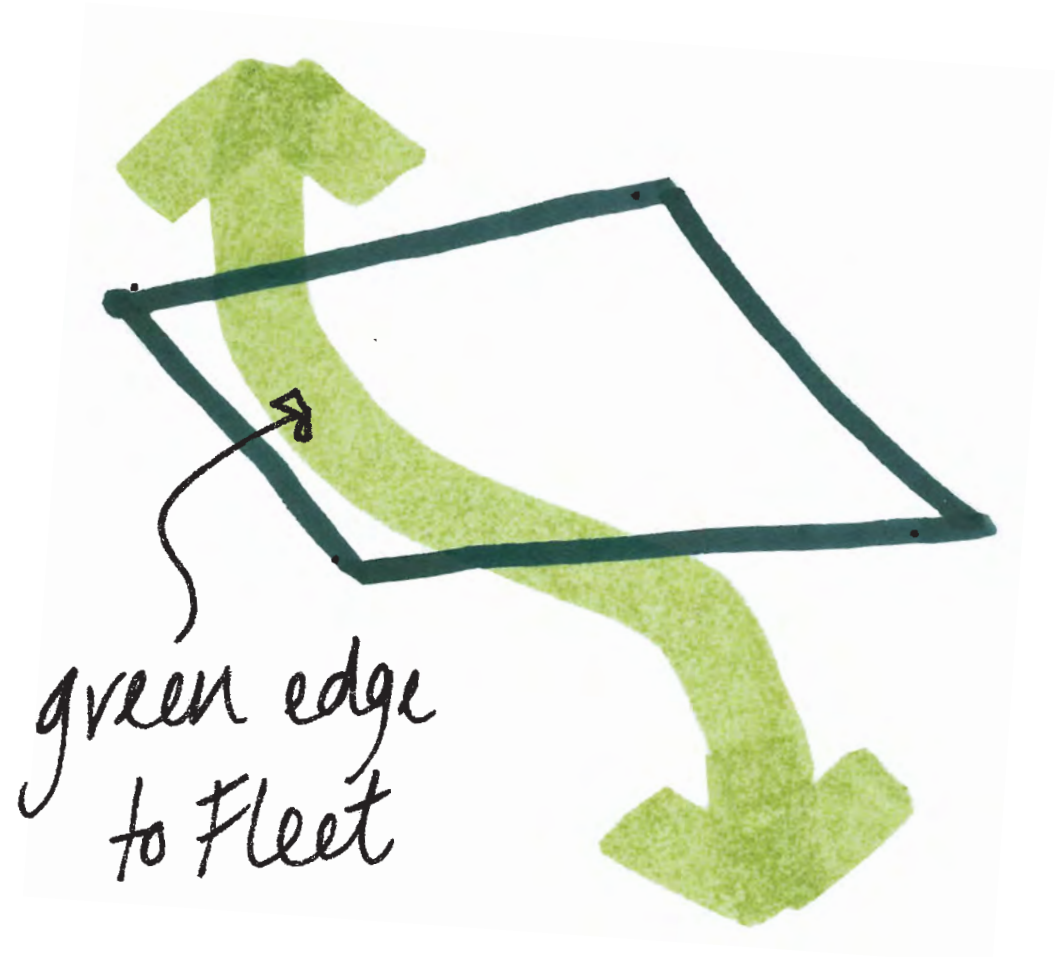
## The site

- Woodlands
- Farmstead
- Considerations



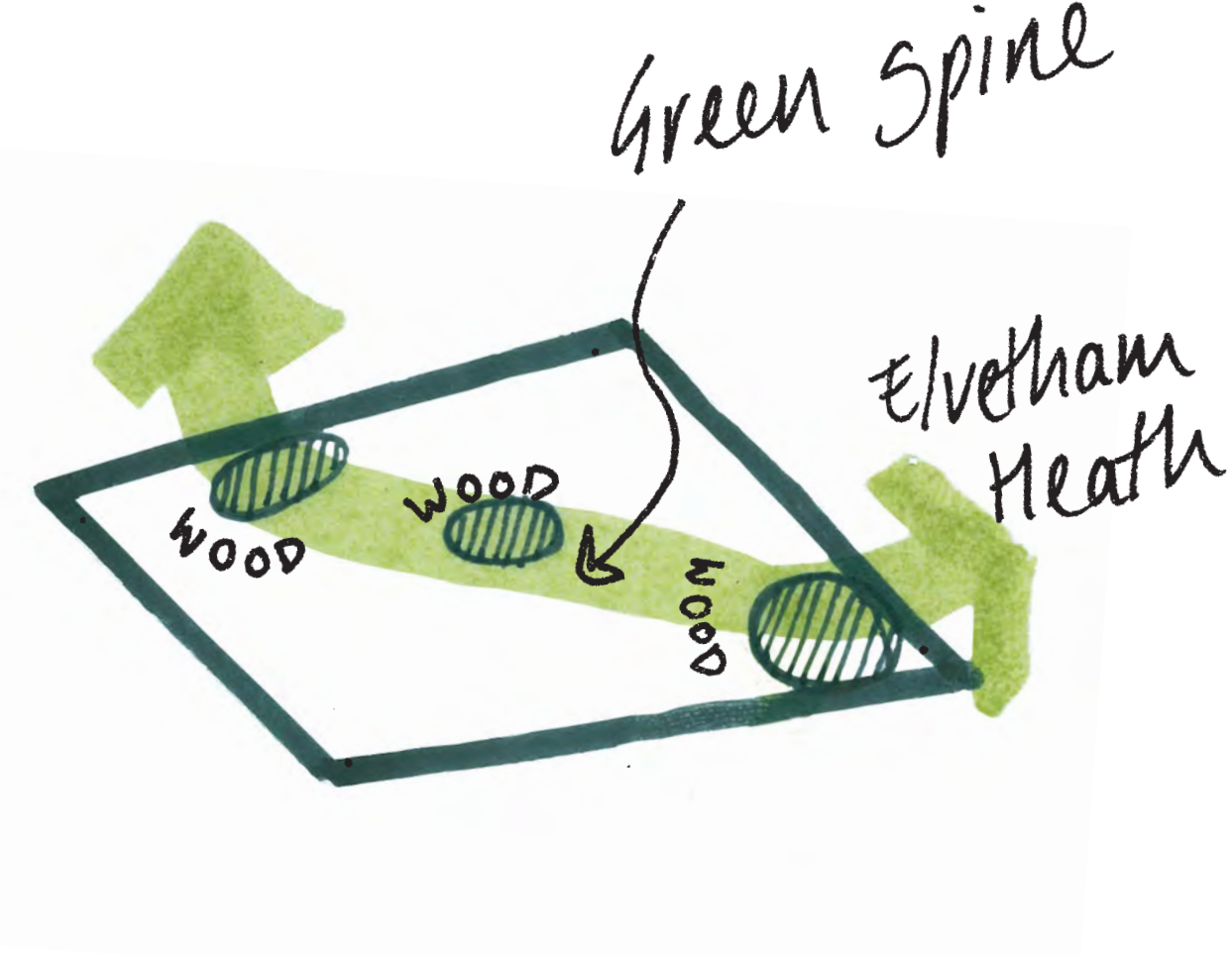
# The Vision

An appropriate edge to Fleet



# The Vision

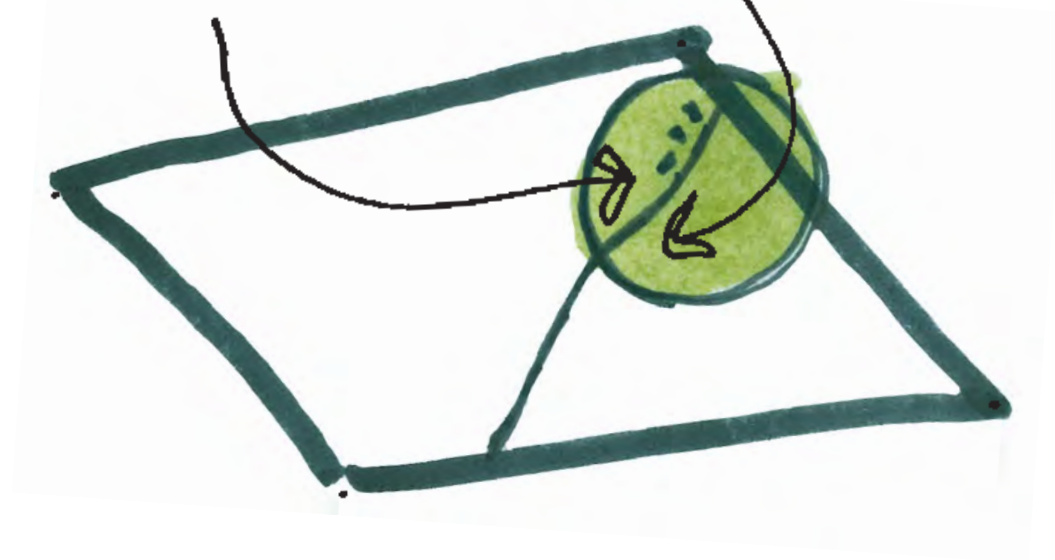
In touch with nature



# The Vision

Recreating the village idyll

Neighbourhood  
Love  
Pate Lane Farmstead



# The Vision

Neighbourhood  
Core



**a community of three woods...Elvetham Chase**

April 2016 Presentation



# The Vision

Woodland Edge

thoughtful



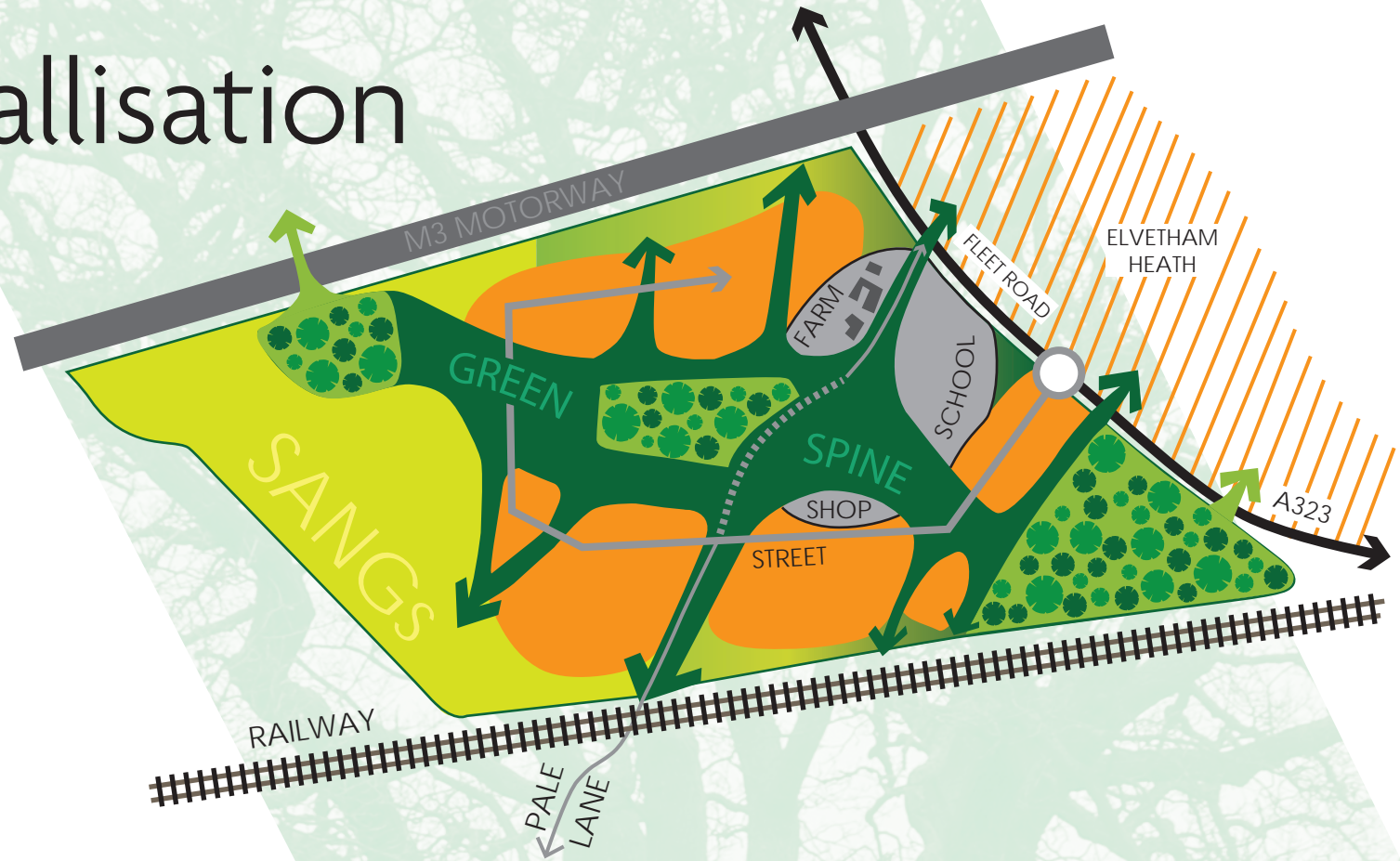
a community of three woods...Elvetham Chase

April 2016 Presentation

# Design Crystallisation

## The concept

- Green Spine
- Neighbourhood Core
- Sustainable Drainage



# Design Crystallisation Constraints

Applying rationale  
to concept



# Design Crystallisation Constraints

- 700 dwellings
- 15 ha SANGs
- 2 form entry primary school
- 16 ha public open space



# Moving Forward

## The design

Further technical studies/surveys to be completed

Refining location and size of:

SANGs

Primary school

Open space (typology and standards)



# Moving Forward EIA development

- Scoping report submission w/c 11.04
- Cumulative impact/scheduling to be agreed



inspired

# Moving Forward Consultation

- Parish Councils
- Public Exhibition
- Statutory Consultees



inclusive



a community  
of three woods...

**Elvetham Chase I** 05 April 2016